



TIDMAS TOWNSEND

An eco-friendly customer focused business

Industrial & Retail Packaging Materials

tidmastownsend.co.uk ☎ 01323 734240



COMPLETE PACKAGING SOLUTIONS





ABOUT US

Tidmas Townsend Ltd are a family run specialist packaging solution company that provide a quick, reliable and friendly service that won't let you down. The company's reputation is built on over 80 years of successful business trading, supplying retail and industrial outlets across the South of England

Our goal is to provide a committed and sustained service to all of our customers both old and new, whilst actively pursuing growth through product improvement and innovation.

We accomplish this by providing our customers with regular visits from an area sales representative, weekly sales calls and effective communication from our office sales staff

HOW TO ORDER



CALL US – 01323 734240

MON – THURS 8AM-5PM OR FRIDAY 7.30AM – 4.30PM

24hr answerphone available



mail@tidmastownsend.co.uk



FAX US – 01323 416894

24HR LINE



VISIT US ONLINE

www.tidmastownsend.co.uk

DELIVERY

Most of our orders are delivered within 24 – 48 hours. If you require goods sooner than this then please contact us.

CARRIAGE

All orders over £50 are carriage paid. Orders under this value may be subject to a small delivery charge.

COLLECTION

Our head office also serves as a cash & carry so please feel free to call in and collect your order (minimum one hours notice required)

PAYMENT METHODS

We can accept the following payment methods. Credit account applications available on request



OUR COMMITMENT TO THE ENVIRONMENT



At Tidmas Townsend we realise the impact that our goods and services may have on the environment. With this in mind we look to contain this impact by implementing the **Reduce, Re-use, Recycle** policy



- **CO2** – We deliver using our own transport and, where possible, organise all of our deliveries into structured routes, delivering to as many customers in one area as possible
- **Sustainable Forestry** – All of our paper products are sustainably sourced. We purchase from manufacturers who are Forest Stewardship Council® (FSC®) certified.
- **ISO 14001** – Many of our suppliers are now registered to ISO 14001 which is the internationally recognised standard for the environmental management of businesses

- **Reduce** – With advances in technology it is now possible to produce many products lighter, thinner or in less outer packaging than before whilst still maintaining the integrity of the product.
- **Re-use** – Many of our products can be reused multiple times if kept well and looked after in the right way. We also supply a range of once used boxes which are widely purchased for household removals.
- **Recycle** – Keep landfill to a minimum and recycle a product if it cannot be reused. Many of our paper and plastic products can be recycled at the relevant waste management facilities.



FSC® C007915

CONTENTS

pg 1–5 CARRIER BAGS

PAPER TOPTWIST CARRIERS
PAPER TAPE HANDLE CARRIERS
PREMIUM CARRIER BAGS
VEST STYLE CARRIER BAGS
ECO FRIENDLY CARRIER BAGS

Pg 6 - 9 BESPOKE CARRIER BAGS

PRINTED VARIGAUGE CARRIERS
PRINTED FLEXILOOP CARRIERS
PRINTED VEST CARRIERS
PRINTED PAPER TAPE HANDLE CARRIERS
PRINTED ROPE HANDLE CARRIERS
PRINTED TOPTWIST CARRIERS
PRINTED COTTON & JUTE CARRIERS
PRINTED DUFFLE CARRIERS
PRINTED NON WOVEN CARRIERS

Pg 10 - 18 FOOD SERVICE

HINGE LID SALAD CONTAINERS
CLEAR PASTIC DELI POTS
MICROWAVE CONTAINERS
TAMPER EVIDENT CONTAINERS
SANDWICH WEDGES
DART EPS TUBS & LIDS
FOIL TRAYS
FOIL CONTAINERS
EPS HOT FOOD BOXES
KRAFT FOOD CONTAINERS
ALLERGY SAFETY LABELS
COFFEE CUPS
EPS CUPS
SMOOTHIE CUPS
COLD DRINK CUPS
SOUP CONTAINERS
DISPOSABLE CUTLERY
WOODEN CUTLERY
DISPOSABLE SERVIETTES
PAPER PLATES
WHITE CAP TISSUE PAPER
PEACH PAPER
GREASEPROOF
DUPLEX SHEETS
BAKING PAPER
PAPER OFFCUTS
CLING FILMS
ALUMINIUM FOILS

Pg 19 - 29 FOOD PROCESSING

HD COUNTER BAGS
HD FILM SHEETS
HI TENSILE SACKS
VACUUM POUCHES
COOKING BAGS
GOLD/SILVER BOARDS
MEAT TRAYS
OVER WRAPPER
TRAY SEALERS
LIDDING FILMS
READY MEAL TRAYS
DELIVERY BOXES
SAUSAGE SEASONINGS
BURGER MIXES
FLAVOUR GLAZES
GLUTEN FREE MIXES
ADDITIONAL BUTCHERY ITEMS
HOG CASINGS
SHEEP CASINGS
RUSKS

Pg 30 - 31 JANITORIAL

HAND TOWELS AND DISPENSERS
KITCHEN CHEMICALS
HAND HYGIENE
GLOVES
JANITORIAL ITEMS

Pg 32 – 34 PAPER BAGS

KRAFT PAPER BAGS
RANDOM PAPER BAGS
BLOCK BOTTOM BAGS
WHITE SULPHITE PAPER BAGS
FILM FRONTED PAPER BAGS
GREASEPROOF PAPER BAGS
FOIL LINED SATCHELS
SWEET BAGS

Pg 35 CELLOPHANE BAGS

POLY PROP BAGS
POLY BREAD SATCHELS
SELF SEAL CELLOPHANE BAGS

Pg 36 FRUIT & VEG SHOP BAGS

POLY BAGS ON ROLL
POTATO BAGS

Pg 37 – 38 POLYTHENE

GRIP SEAL BAGS
WRITE ON PANEL GRIP SEAL BAGS
LAYFLAT TUBING
IMPULSE SEALERS

Pg 39 – 41 TAGS, LABELS AND TILL ROLLS

JEWELLERY TAGS
LUGGAGE LABELS
ADHESIVE LABELS
TILL & CARD MACHINE ROLLS
PRICE GUN LABELS
PRICE GUNS

Pg 42 RETAIL REFUSE SACKS

RETAIL REFUSE SACKS
LOOSE PACKED REFUSE SACKS
DEGRADABLE CADDY LINERS

Pg 43 – 45 CARTONS

SINGLE WALL BOXES
MAIL READY PACKS
PIP BOXES
POSTAL BOXES
DOUBLE WALL BOXES
REAM BOXES
COMPLIMENT SLIP BOXES
ARCHIVE BOXES

Pg 46 – 47 POSTAL

MAIL LITE BUBBLE LINED MAILERS
EM BUBBLE LINED MAILERS
JIFFY PADDED MAILERS
GREY MAILING SACKS
CLEAR MAILING SACKS
DOCUMENT ENCLOSED ENVELOPES
PRINTED POUCH TAPE
POSTAL TUBES

Pg 48 – 50 STATIONERY & OFFICE SUPPLIES

PRINTER & COPIER PAPER
ENVELOPES
PENS
DUPLICATE & TRIPLICATE BOOKS
MARKER PENS
HIGHLIGHTER PENS
STICKY NOTES
OFFICE EQUIPMENT
RUBBER STAMPS

Pg 51 - 52 PROTECTIVE PACKAGING

SMALL BUBBLE WRAP
LARGE BUBBLE WRAP
SELF SEAL BUBBLE BAGS
FLO-PAK LOOSEFILL
NET SACKS
CORRUGATED CARDBOARD ROLLS

Pg 53 PAPER PRODUCTS

TISSUE PAPERS
PAPER OFFCUTS
KRAFT SHEETS
KRAFT PAPER ROLLS

Pg 54 - 56 TAPES

CASE SEALING TAPES
MASKING TAPE
CROSS WEAVE TAPE
SELF ADHESIVE KRAFT PAPER TAPE
GUMMED PAPER TAPE
TAPE DISPENSERS
BAG NECK SEALERS
BONUS TAPES
DOUBLE SIDED TAPE
CLOTH TAPE

Pg 57 PALLET WRAP

CLEAR PALLET WRAP
BLACK PALLET WRAP
HANDY WRAP

PAPER TOPTWIST CARRIERS

CARRIER BAGS: pg 1



Popular with gift shops and boutiques, a superb quality paper carrier. Available for print starting at quantities of 1000

PAPER TOPTWIST CARRIERS SMALL

| Metric Size | Imperial Size | Available Colours | Case Quantity |
|------------------|---------------|-------------------|---------------|
| 180 X 80 X 230MM | 7 X 3 X 9" | WHITE | 300 |
| 180 X 80 X 230MM | 7 X 3 X 9" | KRAFT | 300 |
| 180 X 80 X 230MM | 7 X 3 X 9" | BLACK | 300 |
| 180 X 80 X 230MM | 7 X 3 X 9" | PURPLE | 300 |
| 180 X 80 X 230MM | 7 X 3 X 9" | CERISE | 300 |



WHITE



KRAFT



BLACK

PAPER TOPTWIST CARRIERS MEDIUM

| Metric Size | Imperial Size | Available Colours | Case Quantity |
|-------------------|---------------|-------------------|---------------|
| 240 X 100 X 310MM | 9.5 X 4 X 12" | WHITE | 200 |
| 240 X 100 X 310MM | 9.5 X 4 X 12" | KRAFT | 200 |
| 240 X 100 X 310MM | 9.5 X 4 X 12" | RED | 200 |
| 240 X 100 X 310MM | 9.5 X 4 X 12" | BLUE | 200 |
| 240 X 100 X 310MM | 9.5 X 4 X 12" | GREEN | 200 |
| 240 X 100 X 310MM | 9.5 X 4 X 12" | BLACK | 200 |
| 240 X 100 X 310MM | 9.5 X 4 X 12" | PINK | 200 |
| 240 X 100 X 310MM | 9.5 X 4 X 12" | PURPLE | 200 |
| 240 X 100 X 310MM | 9.5 X 4 X 12" | CERISE | 200 |



RED



BLUE



PURPLE

PAPER TOPTWIST CARRIERS LARGE

| Metric Size | Imperial Size | Available Colours | Case Quantity |
|-------------------|---------------------|-------------------|---------------|
| 320 X 120 X 410MM | 12.5 X 5.5 X 16.25" | WHITE | 200 |
| 320 X 120 X 410MM | 12.5 X 5.5 X 16.25" | KRAFT | 200 |
| 320 X 120 X 410MM | 12.5 X 5.5 X 16.25" | RED | 200 |
| 320 X 120 X 410MM | 12.5 X 5.5 X 16.25" | BLUE | 200 |
| 320 X 120 X 410MM | 12.5 X 5.5 X 16.25" | GREEN | 200 |
| 320 X 120 X 410MM | 12.5 X 5.5 X 16.25" | BLACK | 200 |
| 320 X 120 X 410MM | 12.5 X 5.5 X 16.25" | PINK | 200 |
| 320 X 120 X 410MM | 12.5 X 5.5 X 16.25" | PURPLE | 200 |
| 320 X 120 X 410MM | 12.5 X 5.5 X 16.25" | CERISE | 200 |



GREEN



PINK



CERISE

PAPER TOPTWIST CARRIERS JUMBO

| Metric Size | Imperial Size | Available Colours | Case Quantity |
|-------------------|-----------------|-------------------|---------------|
| 460 X 160 X 480MM | 18 X 6.75 X 19" | WHITE | 150 |
| 460 X 160 X 480MM | 18 X 6.75 X 19" | KRAFT | 150 |
| 460 X 160 X 480MM | 18 X 6.75 X 19" | RED | 150 |
| 460 X 160 X 480MM | 18 X 6.75 X 19" | BLUE | 150 |
| 460 X 160 X 480MM | 18 X 6.75 X 19" | GREEN | 150 |
| 460 X 160 X 480MM | 18 X 6.75 X 19" | BLACK | 150 |
| 460 X 160 X 480MM | 18 X 6.75 X 19" | PINK | 150 |



Now available in 4 sizes!

All of our paper bags are sustainably sourced

PAPER TAPE HANDLE CARRIERS



SMALL PAPER TAKEAWAY SOS CARRIERS

| Size | Available Colours | Case Quantity |
|---------------|-------------------|---------------|
| 7 X 10 X 8.5" | KRAFT | 500 |
| 7 X 10 X 8.5" | WHITE | 500 |

MEDIUM PAPER TAKEAWAY SOS CARRIERS

| Size | Available Colours | Case Quantity |
|--------------|-------------------|---------------|
| 8 X 13 X 10" | KRAFT | 250 |
| 8 X 13 X 10" | WHITE | 250 |

LARGE PAPER TAKEAWAY SOS CARRIERS

| Size | Available Colours | Case Quantity |
|-----------------|-------------------|---------------|
| 10 X 15 X 12.5" | KRAFT | 250 |
| 10 X 15 X 12.5" | WHITE | 250 |

EXTRA LARGE PAPER TAKEAWAY SOS CARRIERS

| Size | Available Colours | Case Quantity |
|---------------|-------------------|---------------|
| 12 X 17 X 16" | KRAFT | 125 |
| 12 X 17 X 16" | WHITE | 125 |

JUMBO PAPER TAKEAWAY SOS CARRIERS

| Size | Available Colours | Case Quantity |
|---------------|-------------------|---------------|
| 16 X 22 X 18" | KRAFT | 200 |
| 16 X 22X 18" | WHITE | 200 |

All of our paper bags are sustainably sourced

Not only are our paper tape handle carriers superb value, they are also strong, environmentally friendly and very versatile. Popular with takeaway establishments and high street retailers alike. As with all our carrier bags, custom print options are available starting at quantities of just 1000



SMALL WHITE SOS



MEDIUM KRAFT SOS



LARGE WHITE SOS



EXTRA LARGE KRAFT SOS

QUALITY CARRIER BAGS

CARRIER BAGS: pg 3

LOW DENSITY SMALL

| Size | Available Colours | Case Quantity |
|---------|-------------------|---------------|
| 8 x 12" | WHITE | 500 |
| 8 x 12" | IVORY | 500 |
| 8 x 12" | BLACK | 500 |
| 8 x 12" | DARK BLUE | 500 |
| 8 x 12" | SILVER | 500 |
| 8 x 12" | GOLD | 500 |
| 8 x 12" | BURGUNDY | 500 |
| 8 x 12" | HARRODS GREEN | 500 |
| 8 x 12" | CLEAR | 500 |
| 8 x 12" | YELLOW | 500 |



DARK BLUE



PINK



HARRODS GREEN



CLEAR



IVORY



BURGUNDY



BLACK



SILVER



YELLOW

LOW DENSITY MEDIUM

| Size | Available Colours | Case Quantity |
|----------|-------------------|---------------|
| 10 x 16" | DARK BLUE | 500 |
| 10 x 16" | SILVER | 500 |
| 10 x 16" | GOLD | 500 |
| 10 x 16" | HARRODS GREEN | 500 |
| 10 x 14" | CLEAR | 500 |

LOW DENSITY LARGE

| Size | Available Colours | Case Quantity |
|----------|-------------------|---------------|
| 15 x 18" | WHITE | 500 |
| 15 x 18" | IVORY | 500 |
| 15 x 18" | BLACK | 500 |
| 15 x 18" | DARK BLUE | 500 |
| 15 x 18" | SILVER | 500 |
| 15 x 18" | GOLD | 500 |
| 15 x 18" | BURGUNDY | 500 |
| 15 x 18" | HARRODS GREEN | 500 |
| 15 x 18" | CLEAR | 500 |
| 15 x 18" | ORANGE | 500 |
| 15 x 18" | POST BOX RED | 500 |
| 15 x 18" | PINK | 500 |

LOW DENSITY EXTRA LARGE

| Size | Available Colours | Case Quantity |
|----------|-------------------|---------------|
| 22 x 18" | WHITE | 500 |
| 22 x 18" | IVORY | 500 |
| 22 x 18" | BLACK | 500 |
| 22 x 18" | DARK BLUE | 500 |
| 22 x 18" | SILVER | 500 |
| 22 x 18" | GOLD | 500 |
| 22 x 18" | BURGUNDY | 500 |
| 22 x 18" | HARRODS GREEN | 500 |
| 22 x 18" | CLEAR | 500 |
| 22 x 18" | POST RED BOX | 500 |
| 24 x 20" | WHITE | 250 |
| 28 x 23" | HARRODS GREEN | 250 |



GOLD



RED

LOW DENSITY JUMBO

| Size | Available Colours | Case Quantity |
|----------|-------------------|---------------|
| 24 x 20" | WHITE | 250 |
| 28 x 23" | HARRODS GREEN | 250 |



ORANGE

High-end glossy carriers that really give your business that professional look. Popular with many different types of high street retailers, our bags are available in a wide range of colours and sizes. Also available for custom print starting from quantities of just 1000

VEST STYLE CARRIER BAGS

WHITE HIGH DENSITY VEST CARRIERS

| Description | Size | Micron | Case Quantity |
|-----------------------|----------------|--------|---------------|
| 4KG MEDIUM VEST WHITE | 10 X 15 X 18" | 11 | 2000 |
| HAIL LARGE VEST WHITE | 11 X 17 X 23" | 15 | 2000 |
| HIPPO XL VEST WHITE | 13 X 19 X 23" | 32 | 1000 |
| MONSTER VEST WHITE | 18 X 25 X 32" | 25 | 500 |
| BOTTLE VEST WHITE | 7 X 10 X 17.5" | 18 | 2000 |

This range of economical carrier bags are strong, lightweight and suitable for a range of items. Available in a small size suitable for bottles right up to a jumbo size suitable for pillows and large toys



WHITE VEST CARRIERS

COLOURED HIGH DENSITY VEST CARRIERS

| Description | Size | Micron | Case Quantity |
|--------------------|----------------|--------|---------------|
| BLACK BOTTLE VEST | 7 X 10 X 17.5" | 18 | 2000 |
| MEDIUM STRIPE VEST | 10 X 15 X 18" | 12 | 2000 |
| LARGE STRIPE VEST | 11 X 17 X 21" | 15 | 2000 |



BLACK BOTTLE VEST CARRIER

BUTCHERS VEST CARRIERS

| Description | Size | Case Quantity |
|-----------------------|---------------|---------------|
| BUTCHERS VEST CARRIER | 11 X 17 X 19" | 2000 |



A printed vest carrier especially for butchers



STRIPE VEST CARRIERS

ECO FRIENDLY CARRIER BAGS

DEGRADABLE VEST CARRIERS

| Description | Size | Micron | Case Quantity |
|------------------------|---------------|--------|---------------|
| MEDIUM DEGRADABLE VEST | 11 X 17 X 21" | 20 | 2000 |
| JUMBO DEGRADABLE VEST | 13 X 19 X 23" | 22 | 1000 |



White degradable vest carriers for the retail trade, these carriers will start to degrade in 12 months. The carriers are printed stating they are degradable



DEGRADABLE VESTS



Our degradable carriers contain TDPA® (Totally Degradable Plastic Additives) TDPA cause the plastic to degrade* at a controlled rate when the plastic is exposed to photo (sunlight), thermal (heat) and/or mechanical stress and, in the case of polyethylene products (such as grocery, shopping and garbage bags), TDPA® causes the plastic to ultimately biodegrade*. Plastic incorporating TDPA® is cost-competitive. It is virtually indistinguishable in appearance and performance from traditional non-degradable plastics until degradation of the product is triggered in accordance with end-user requirements (following its "shelf" or "service" life).

RECYCLED VEST CARRIERS

| Description | Size | Micron | Case Quantity |
|-------------------------------------|---------------|--------|---------------|
| MEDIUM DUTY BLUE RECYCLED VEST | 11 X 17 X 21" | 18 | 1000 |
| HEAVY DUTY BLUE RECYCLED VEST | 11 X 17 X 21" | 24 | 1000 |
| LARGE HEAVY DUTY BLUE RECYCLED VEST | 12 X 18 X 24" | 26 | 1000 |



Available in 2 different sizes with varying thicknesses, these bags are made from recycled polythene and are popular with retailers and market traders alike



CUSTOM PRINT CARRIER BAGS YOUR NAME YOUR BAG

We specialise in custom printing of many different types of carriers bags. We source stock from the UK and overseas, thus always ensuring genuine quality in all of our products.

PRINTED VARIGAUGE CARRIERS

Varigauge carriers offer great value for money and an attractive design that is popular with many high street retailers. Available in a range of colours and sizes from 8x12" up to 28x23".

Starting at runs of just 1000 bags



MANUFACTURED IN DEGRADABLE FILM AS STANDARD



PRINTED FLEXILOOP CARRIERS

Often manufactured as a bag for life, flexiloop carriers offer outstanding strength and are extremely durable. Available in a range of colours and sizes to suit your needs

Starting at runs of just 1000 bags



PRINTED VEST CARRIERS

One of our most popular and cost effective bags. Vest carriers are a strong and durable polythene carrier,

They are incredibly light and are available in a wide range of colours and can be printed with your design in up to 4 colours!

Runs start from just 5,000 bags



PRINTED PAPER TAPE HANDLE CARRIERS

A versatile carrier popular with takeaway food establishments. Available in a variety of colours and sizes

Runs start from just 1,000 bags



REUSE
REDUCE
RECYCLE

PRINTED ROPE HANDLE CARRIERS

Rope handled bags are available in three styles, laminated paper, draw string and kraft paper.

All are suitable for retail and as a promotional tool at exhibitions.

Runs start from just
1,000 bags



PRINTED TOPTWIST CARRIERS

Made from thick paper and popular with many quality retail outlets.

Currently available in 5 different sizes and a wide range of colours

Runs start from just 1,000 bags



COTTON AND JUTE CARRIERS

Two superb bags for life which work as great promotional or resale items.

Available in small quantities in a range of sizes and styles

Runs start from just 250 bags



DUFFLE STYLE CARRIERS

Duffle bags are excellent for fashion or promotional bags, they are fitted with a rope handle that draws the top of the bag closed and can be easily carried on the shoulder.

Runs start from just 1,000 bags



PRINTED NONWOVEN CARRIERS

Nonwoven poly prop bags are a "bag for life" and are very strong and durable.

Suitable for all shopping needs these carriers have a resale value to the public.

Our nonwoven poly prop bags are available in various styles, shoppers, gusseted, long or short handles, various colours and sizes available.

Runs start from just 500 bags



HINGE LID SALAD CONTAINERS (RPET)

| Size | Case Qty |
|--------|----------|
| 250CC | 765 |
| 375CC | 600 |
| 500CC | 600 |
| 750CC | 360 |
| 1000CC | 320 |



Perfectly clear and made from recycled PET, these containers are perfect for cold foods such as salads and deli items. They are freezer safe and fully recyclable. Quick and easy to use



CLEAR PLASTIC DELI POTS

| Size | Description | Case Qty |
|------|----------------------|----------|
| 4OZ | CLEAR DELI POT & LID | 1000 |
| 8OZ | CLEAR DELI POT & LID | 250 |
| 12OZ | CLEAR DELI POT & LID | 250 |



Fully recyclable and microwavable , these containers are perfect for cold deli items such as olives



MICROWAVE CONTAINERS

| Size | Description | Case Qty |
|--------|-----------------|----------|
| 500CC | CONTAINER & LID | 250 |
| 650CC | CONTAINER & LID | 250 |
| 750CC | CONTAINER & LID | 250 |
| 1000CC | CONTAINER & LID | 250 |

Commonly used by takeaway establishments, fully microwavable and recyclable



TAMPER EVIDENT CONTAINERS

| Size | Diameter | Description | Case Qty |
|--------|-------------|-----------------|----------|
| 180ML | 97MM | CONTAINER & LID | 500 |
| 280ML | 97MM | CONTAINER & LID | 500 |
| 375ML | 97MM | CONTAINER & LID | 500 |
| 520ML | 97MM | CONTAINER & LID | 500 |
| 670ML | 105MM | CONTAINER & LID | 500 |
| 800ML | 122ML | CONTAINER & LID | 240 |
| 250ML | 122ML | CONTAINER ONLY | 324 |
| 250ML | 122ML | LID ONLY | 324 |
| 1000ml | RECTANGULAR | CONTAINER & LID | 108 |
| 1600ML | RECTANGLUAR | CONTAINER & LID | 104 |



These containers feature tamper evident collars and are fully microwavable. They are also fully recyclable and offer a leak proof solution for liquids and also dry foods



SANDWICH WEDGES

| Description | Case Qty |
|----------------------|----------|
| CLEAR STANDARD WEDGE | 500 |
| CLEAR DEEPFILL WEDGE | 500 |
| CLEAR TRIPLE WEDGE | 500 |



Clear hinge lid containers that are a cost effective and efficient solution for sandwich packing, making them quick and easy to use

‘DART’ EPS TUBS & LIDS

| Size | Description | Case Qty |
|-------------|---------------|----------|
| 2OZ | EPS CONTAINER | 1000 |
| 4OZ | EPS CONTAINER | 1000 |
| 8OZ | EPS CONTAINER | 500 |
| 12OZ | EPS CONTAINER | 500 |
| 20OZ | EPS CONTAINER | 500 |
| 4OZ | CONTAINER LID | 1000 |
| 8OZ-20OZ | CONTAINER LID | 500 |
| 20OZ – 32OZ | CONTAINER LID | 500 |



Made from white expanded polystyrene (EPS) these containers are perfect for many types of foods and liquids. EPS is a superb insulator and is therefore well suited for hot foods

FOIL PIE TINS

| Code | Size | Description | Case Qty |
|---------|--------------|-------------------|----------|
| 00.4.03 | 133x100x26mm | OVAL DISH SMALL | 2100 |
| 00.4.24 | 187x144x35mm | OVAL DISH MEDIUM | 880 |
| 00.5.12 | 110x33mm | ROUND DISH LANCED | 1000 |
| 00.5.27 | 154x32mm | ROUND DISH | 1200 |
| 00.8.13 | 164x29mm | QUICHE FOIL | 900 |
| 00.8.16 | 216x24mm | FLAN FOIL | 680 |
| 00.9.11 | 197x16mm | ROUND FOIL LARGE | 1300 |
| 00.9.12 | 227x18mm | LARGE FOIL PLATE | 660 |



FOIL CONTAINERS

| Size | Description | Case Qty |
|-------------|-------------------|----------|
| 201 X 109MM | 6A FOIL CONTAINER | 500 |
| N/A | 6A POLY BOARD LID | 500 |

Commonly used by takeaway food establishments, these containers are perfect for hot food and sauces



EPS HOT FOOD BOXES

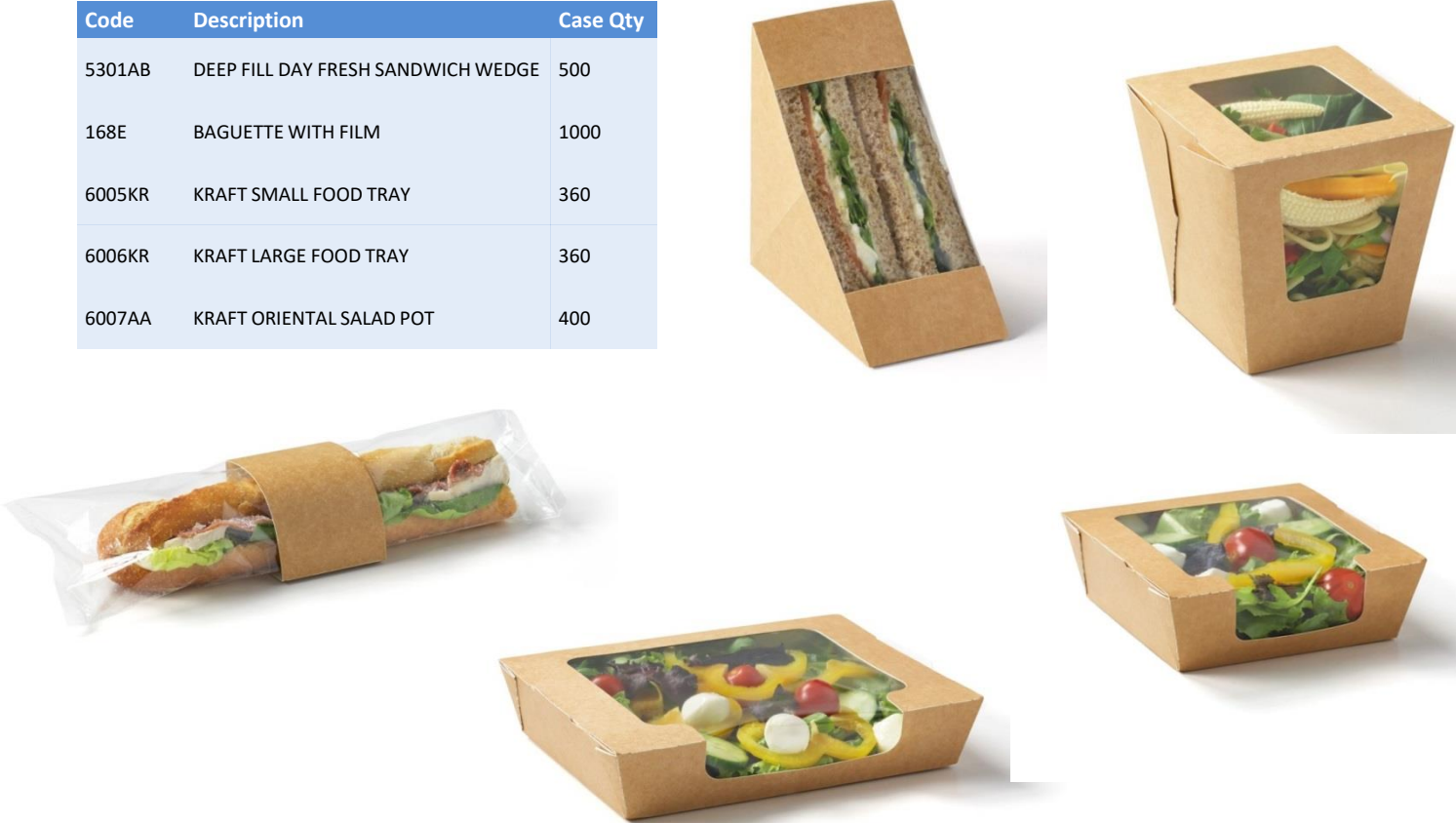
| Code | Description | Case Qty |
|------|-------------------|----------|
| HB6 | BURGER BOX | 500 |
| HB10 | LARGE FOOD BOX | 500 |
| OVO6 | JACKET POTATO BOX | 500 |
| HB4 | MENU BOX | 250 |

A favourite of many takeaways



KRAFT FOOD CONTAINERS

| Code | Description | Case Qty |
|--------|------------------------------------|----------|
| 5301AB | DEEP FILL DAY FRESH SANDWICH WEDGE | 500 |
| 168E | BAGUETTE WITH FILM | 1000 |
| 6005KR | KRAFT SMALL FOOD TRAY | 360 |
| 6006KR | KRAFT LARGE FOOD TRAY | 360 |
| 6007AA | KRAFT ORIENTAL SALAD POT | 400 |



Our range of eco friendly food packaging is a superb option for those looking to assure customers of their commitment to helping the environment

Each product is fully recyclable and contains a thin laminate inside to prevent the contents from going dry

The range is designed with both consumer and retailer in mind, thus offering fantastic design ingenuity and superb brand awareness

Custom branding is available on all of these products, please call us to discuss your requirements

FOOD LABELS

| Description | Roll Qty |
|----------------------------------|----------|
| FRESHLY PREPARED SANDWICH LABELS | 1000 |
| REDUCED FOR QUICK SALE LABELS | 1000 |
| REDUCED TO CLEAR LABELS | 1000 |

ALLERGY SAFETY LABELS

| Description | Roll Qty |
|-----------------------|----------|
| ALLERGY SAFETY LABELS | 500 |



‘ENJOY’ DOUBLE WALL COFFEE CUP

| Size | Description | Case Qty |
|---------|---------------|----------|
| 8/9OZ | ENJOY CUP | 875 |
| 12OZ | ENJOY CUP | 680 |
| 16OZ | ENJOY CUP | 560 |
| 8/9OZ | WHITE SIP LID | 1000 |
| 12/16OZ | WHITE SIP LID | 1000 |

A ripple effect double wall coffee cup. Double wall cups are insulated and will not burn your customers hands, they require no external sleeve and are supplied with a nice mixture of colours in a box



Enjoy Cups

‘CUPPOCCINO’ DOUBLE WALL COFFEE CUP

| Size | Description | Case Qty |
|---------|----------------|----------|
| 12OZ | CUPPOCCINO CUP | 740 |
| 16OZ | CUPPOCCINO CUP | 620 |
| 12/16OZ | WHITE SIP LID | 1000 |



Cuppoccino Cup

We are also able to supply custom print hot drink cups, please enquire for details

‘DART’ EPS HOT DRINK CUPS

| Size | Description | Case Qty |
|---------|-------------|----------|
| 7OZ | EPS CUP | 1000 |
| 10OZ | EPS CUP | 1000 |
| 12OZ | EPS CUP | 1000 |
| 14OZ | EPS CUP | 1000 |
| 16OZ | EPS CUP | 1000 |
| 20OZ | EPS CUP | 500 |
| 7OZ | CUP LID | 1000 |
| 10OZ | CUP LID | 1000 |
| 12OZ | CUP LID | 1000 |
| 16/20OZ | CUP LID | 1000 |



EPS Cup Lid



Sip Lid



CLEAR SMOOTHIE CUPS

| Size | Description | Case Qty |
|---------|---------------------|----------|
| 12OZ | SMOOTHIE CUP | 1000 |
| 16OZ | SMOOTHIE CUP | 1000 |
| 12/16OZ | DOMED LID WITH HOLE | 1000 |



A clear plastic cup with a domed lid . Perfect for cold drinks such as milk shakes and smoothies

CLEAR PLASTIC GLASSES

| Size | Description | Case Qty |
|-----------|---------------|----------|
| 7OZ | PLASTIC GLASS | 1000 |
| HALF PINT | PLASTIC GLASS | 1000 |
| PINT | PLASTIC GLASS | 500 |



DRINK CUP CARRY TRAY

| Size | Description | Case Qty |
|-------|-------------|----------|
| 2 CUP | CARRY TRAY | 480 |
| 4 CUP | CARRY TRAY | 220 |



‘MMMMM’ SOUP CONTAINER

| Size | Description | Case Qty |
|------|-----------------|----------|
| 12OZ | CONTAINER & LID | 250 |
| 16OZ | CONTAINER & LID | 250 |

Paper container designed for hot take away soups although can be used for many other types of hot or cold food



DISPOSABLE CUTLERY

| Description | Case Qty |
|-----------------------|----------|
| PLASTIC FORK | 1000 |
| PLASTIC KNIFE | 1000 |
| PLASTIC SPOON | 1000 |
| PLASTIC DESSERT SPOON | 1000 |
| PLASTIC SPOON | 1000 |



Wooden Stirrer

Plastic Spork

WOODEN CUTLERY

| Description | Case Qty |
|----------------|----------|
| WOODEN FORK | 1000 |
| WOODEN KNIFE | 1000 |
| WOODEN SPOON | 1000 |
| WOODEN STIRRER | 1000 |



Wooden cutlery is the perfect eco friendly alternative to plastic cutlery. Fully degradable and recyclable

SERVIETTES

| Size | Description | Case Qty |
|-------------|---------------------|----------|
| 30 X 30cm | 1PLY WHITE | 5000 |
| 33 X 33cm | 2PLY WHITE | 2000 |
| 30.5 X 22cm | DISPENSER SERVIETTE | 7200 |



Dispensers Available

PAPER PLATES

| Size | Description | Case Qty |
|------|-------------------|----------|
| 18cm | WHITE PAPER PLATE | 1000 |
| 25cm | WHITE PAPER PLATE | 1000 |



WHITE CAP TISSUE PAPER

| Size | Pack Quantity |
|--------------------|---------------|
| 16 X 24" | 480 SHEETS |
| 18 X 28" | 480 SHEETS |
| 18 X 28" ACID FREE | 480 SHEETS |



White Cap Tissue

Commercially acid free white cap tissue is ideal for wrapping many bread and bakery products

PEACH PAPER

| Size | Case Qty |
|----------|-------------|
| 10 x 12" | 2000 SHEETS |
| 20 x 30" | 480 SHEETS |

Our peach paper maintains the freshness of meat as well as being extremely durable when wet or dry to avoid tearing when you remove meat from it. Peach paper saves you time as you are able to prepare the product further in advance in anticipation of busy periods as it prolongs the life of the meat.



Peach Paper

PURE GREASEPROOF SHEETS

| Size | Description | Case Qty |
|-------------|-------------------|-------------|
| 225 X 350mm | CUT 4 GREASEPROOF | 2000 SHEETS |
| 450 X 700mm | GREASEPROOF | 480 SHEETS |



Greaseproof Sheets

Pure and Imitation greaseproof sheets ideal for wrapping meats, cheeses and many other food products

IMITATION GREASEPROOF SHEETS

| Size | Description | Case Qty |
|-------------|---------------|-------------|
| 225 X 350mm | CUT 4 WETWRAP | 2000 SHEETS |
| 450 X 700mm | WETWRAP | 480 SHEETS |

DUPLEX FOOD WRAP SHEETS

| Size | Description | Case Qty |
|-------------|-------------------|----------|
| 250 X 375mm | BLUE/WHITE WRAP | 1000 |
| 250 X 375mm | RED/WHITE WRAP | 1000 |
| 250 X 375mm | GREEN/WHITE WRAP | 1000 |
| 250 X 375mm | YELLOW/WHITE WRAP | 1000 |
| 250 X 375mm | BROWN/WHITE WRAP | 1000 |



Duplex Wrap

Waxed paper with a film lining on one side, perfect for wrapping cheeses and meats and available in a variety of colours

SILICONE BAKE PAPER

| Size | Case Qty |
|----------|------------|
| 18 x 30" | 480 SHEETS |

Useful for every kind of baking including biscuits, fruit cakes and swiss rolls, both in conventional and microwave ovens up to a temperature of 230 deg C

NEWS PAPER OFFCUTS

| Sheet Size | Colour | Weight Per Pack |
|------------|--------|-----------------|
| 17 X 20" | WHITE | 10KG |
| 20 X 30" | WHITE | 10KG |



News Offcuts

News offcuts are food safe and are commonly used to wrap fish and chips

CATERING CLING FILM

| Roll Width | Roll Length | Qty |
|------------|-------------|------|
| 300mm | 300m | ROLL |
| 450mm | 300m | ROLL |



450mm Cling film

Catering quality cling film and aluminium foil sold in a handy cutter box for ease of use

PERFORATED CLING FILM

| Roll Width | Roll Length | Case Qty |
|------------|-------------|----------|
| 300mm | 300m | 3 rolls |

CATERING ALUMINIUM

| Roll Width | Roll Length | Qty |
|------------|-------------|------|
| 300mm | 75m | ROLL |
| 450mm | 75m | ROLL |



300mm Foil

BAKING PARCHMENT

| Roll Width | Roll Length | Qty |
|------------|-------------|------|
| 450mm | 75m | ROLL |



WRAPMASTER SYSTEM

| Size | Description | Case Qty |
|--------------|----------------------------|----------|
| 300mm | DISPENSER | 1 |
| 450mm | DISPENSER | 1 |
| 300mm x 300m | WRAPMASTER CLINGFILM ROLLS | 3 |
| 450mm x 300m | WRAPMASTER CLINGFILM ROLLS | 3 |
| 450mm x 150m | WRAPMASTER FOIL ROLLS | 2 |



The Wrapmaster system is an advanced cling film system that offers many benefits, such as waste reduction, easy cut system, portability and efficiency

OVER WRAPPING FILM

| Roll Width | Roll Length |
|------------|-------------|
| 300mm | 1500m |
| 350mm | 1500m |
| 380mm | 1500m |
| 400mm | 1500m |
| 450mm | 1500m |



Large clingfilm rolls often stored and dispensed from an over wrapping machine. Commonly used by butchers and deli's for wrapping up meat and cheese packs

HD COUNTER BAGS

| Size Imperial | Size Metric | Description | Pack Qty |
|---------------|-------------|-----------------|----------|
| 6 x 8" | 150 x 200mm | HD COUNTER BAGS | 1000 |
| 8 x 10" | 200 x 250mm | HD COUNTER BAGS | 1000 |
| 10 x 12" | 250 x 300mm | HD COUNTER BAGS | 1000 |
| 12 x 15" | 300 x 375mm | HD COUNTER BAGS | 1000 |
| 12 x 18" | 300 x 450mm | HD COUNTER BAGS | 1000 |

High Density counter bags, widely used within the food service industry as a simple and cost effective way to package food items



HD Counter Bags

HD COUNTER BAGS BOXED

| Size Imperial | Size Metric | Description | Box Qty |
|---------------|-------------|--------------------|---------|
| 8 x 10" | 200 x 250mm | BOXED COUNTER BAGS | 1000 |
| 10 x 12" | 250 x 300mm | BOXED COUNTER BAGS | 1000 |
| 12 x 15" | 300 x 375mm | BOXED COUNTER BAGS | 1000 |
| 12 x 18" | 300 x 450mm | BOXED COUNTER BAGS | 1000 |



See page 56 for our bag neck sealers

HD BAGS ON ROLL

| Size Imperial | Size Metric | Description | Roll Qty |
|---------------|-------------|--------------------------|----------|
| 10 x 12" | 250 x 300mm | HD BAG ON ROLL | 1000 |
| 12 x 15" | 300 x 375mm | HD BAG ON ROLL (PENGUIN) | 1000 |



HDPE FILM SHEETS

| Size | Description | Qty |
|----------|--------------------|----------|
| 9 x 14" | SHEETS | 2000 |
| 14 x 18" | SHEETS | 2000 |
| 18 X 28" | SHEETS | 2000 |
| 9 X 14" | SHEETS ON THE ROLL | 2000 |
| 10 x 15" | CELLOPHANE SHEETS | 2KG PACK |



Food safe film sheets often used to wrap meat and cheese

HDPE Sheets

HI TENSILE BAG ON ROLL

| Size Imperial | Size Metric | Description | Colour |
|---------------|-------------|----------------|--------|
| 18 X 24" | 450 X 600mm | HI TENSILE BAG | WHITE |
| 18 X 24" | 450 X 600mm | HI TENSILE BAG | BLUE |
| 24 X 35" | 600 X 875mm | HI TENSILE BAG | WHITE |
| 24 x 35" | 600 X 875mm | HI TENSILE BAG | BLUE |

Hi Tensile sacks supplied on the roll and available in 2 different sizes and colours.



HI TENSILE SACKS

| Size Imperial | Size Metric | Description | Case Qty |
|---------------|-------------|------------------|----------|
| 12 X 18" | 300 x 450mm | HI TENSILE SACKS | 2000 |
| 15 X 20" | 375 x 500mm | HI TENSILE SACKS | 1000 |
| 18 x 24" | 450 x 600mm | HI TENSILE SACKS | 1000 |
| 20 x 30" | 500 x 750mm | HI TENSILE SACKS | 500 |
| 24 x 36" | 600 x 900mm | HI TENSILE SACKS | 500 |

Strong HT Sacks often used by butchers for large catering orders. Supplied on a block head in packs of 100 for hanging



CLEAR VACUUM POUCHES 70 MICRON

| Size Metric | Case Qty |
|-------------|----------|
| 140 x 170mm | 1000 |
| 140 x 200mm | 1000 |
| 150 x 160mm | 1000 |
| 150 x 265mm | 1000 |
| 160 x 200mm | 1000 |
| 160 x 250mm | 1000 |
| 160 x 300mm | 1000 |
| 160 x 350mm | 1000 |
| 180 x 300mm | 1000 |
| 200 x 200mm | 1000 |
| 200 x 300mm | 1000 |
| 200 x 350mm | 1000 |
| 200 x 400mm | 1000 |
| 200 x 600mm | 1000 |
| 210 x 250mm | 1000 |
| 220 x 250mm | 1000 |
| 240 x 650mm | 1000 |
| 250 x 250mm | 1000 |
| 250 x 300mm | 1000 |
| 250 x 350mm | 1000 |
| 250 x 400mm | 1000 |
| 250 x 450mm | 1000 |
| 270 x 325mm | 1000 |
| 280 x 540mm | 1000 |
| 280 x 600mm | 1000 |
| 300 x 260mm | 1000 |
| 300 x 300mm | 1000 |
| 300 x 350mm | 1000 |
| 300 x 400mm | 1000 |
| 300 x 450mm | 500 |
| 300 x 500mm | 500 |
| 300 x 750mm | 500 |
| 320 x 360mm | 1000 |
| 320 x 375mm | 500 |
| 320 x 520mm | 500 |
| 350 x 350mm | 1000 |
| 350 x 400mm | 1000 |
| 350 x 450mm | 1000 |
| 350 x 750mm | 500 |
| 350 x 900mm | 500 |
| 360 x 520mm | 500 |
| 370 x 500mm | 500 |
| 380 x 560mm | 500 |
| 400 x 400mm | 500 |
| 400 x 500mm | 500 |
| 400 x 600mm | 500 |
| 400 x 700mm | 500 |
| 430 x 650mm | 500 |
| 470 x 570mm | 500 |
| 530 x 650mm | 300 |



Clear Vacuum Pouches



Vacuuming products using our vacuum pouches is an ideal method for extending the shelf life of food. Vacuuming creates an airless environment and is often used to extend the life of products such as fish, cheese, bacon, cured meats, frozen foods and vegetables

Our 70 micron pouches offer the necessary strength to protect food items efficiently and can also be custom printed with company logo's or cooking instructions. Please call us for help and advice with your requirements.

GOLD BACKED CLEAR FRONT VACUUM POUCHES

| Size Metric | Qty |
|-------------|------|
| 110 x 250mm | 1000 |
| 110 x 325mm | 1000 |
| 140 x 200mm | 1000 |
| 150 x 400mm | 1000 |
| 160 x 200mm | 1000 |
| 160 x 250mm | 1000 |
| 160 x 300mm | 1000 |
| 180 x 200mm | 1000 |
| 180 x 275mm | 1000 |
| 180 x 300mm | 1000 |
| 185 x 250mm | 1000 |
| 200 x 250mm | 1000 |
| 200 x 300mm | 1000 |
| 250 x 250mm | 1000 |
| 250 x 300mm | 1000 |



Gold backed vacuum pouches offer an attractive packaging solution for many food items. Each pouch features a Euro slot hanging hole for retail display

CHAMBERLESS VACUUM PACKER

Our chamberless vacuum packer is perfect for those looking to vacuum raw and cooked products without spending thousands of pounds on a chamber machine.

Our machine's compact design means it won't take up a large portion of counter space but will still have the power to vacuum products quickly and efficiently

We have a large range of embossed vacuum pouches available for use with this machine, please see below

technical data :

Number of Pumps : 1

Pump Capacity: 16 ltr./Minute

Max. Vacuum : -0,80 bar

Width of sealing bar: 300 mm

Nom. Cap. Pmax : 100W

Measurement: 380x180x110 mm

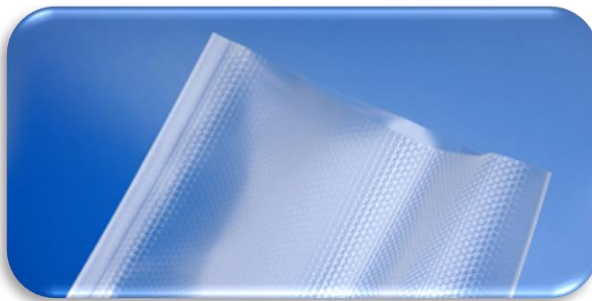
Weight: 2 kg.

MADE IN ITALY



EMBOSSED VACUUM POUCHES

| Size Metric | Qty |
|-------------|------|
| 150 x 300mm | 1000 |
| 200 x 250mm | 1000 |
| 200 x 300mm | 1000 |
| 250 x 300mm | 1000 |
| 250 x 350mm | 1000 |
| 300 x 400mm | 1000 |
| 350 x 450mm | 1000 |
| 400 x 600mm | 1000 |



Embossed pouches are strong and reliable and are designed for use only, with our chamber less vacuum packer



EMBOSSED VACUUM POUCHES ON ROLLS

| Size | Qty |
|------------------|-----------------|
| 6mtr Rolls 150mm | 2 Rolls Per Box |
| 6mtr Rolls 200mm | 2 Rolls Per Box |
| 6mtr Rolls 250mm | 2 Rolls Per Box |
| 6mtr Rolls 300mm | 2 Rolls Per Box |



GOLD/SILVER BOARDS

| Size Metric | Qty |
|-------------|------|
| 120 x 215mm | 1000 |
| 170 x 240mm | 1000 |
| 180 x 540mm | 1000 |



Our Gold/ Silver boards are a great way of protecting goods within a vacuum pouch whilst also giving them a high quality appearance

NALOPHAN COOKING BAGS

| Size | Qty |
|----------|-----|
| 300 x 80 | x25 |

Designed for cooking meats, these bags will shrink and help retain flavour whilst cooking. Sometimes referred to as Ham Miser bags



EPS MEAT TRAYS

| Code | Size Metric | Available Colours | Qty |
|------|------------------|-------------------------------|------|
| M1 | 133 x 133 x 16mm | White/Blue | 500 |
| M2 | 178 x 133 x 16mm | White/Black/Blue/Yellow | 500 |
| M3 | 222 x 133 x 16mm | White/Black/Blue | 500 |
| M8 | 267 x 133 x 16mm | White/Blue | 500 |
| M13 | 216 x 152 x 16mm | White/Blue | 500 |
| M14 | 216 x 178 x 16mm | White/Black/Blue/Green/Yellow | 250 |
| M15 | 216 x 241 x 16mm | White/Blue | 250 |
| D1 | 133 x 133 x 25mm | White/Black/Blue/Green | 500 |
| D2 | 178 x 133 x 25mm | White/Black/Blue/Green/Yellow | 500 |
| D3 | 222 x 133 x 25mm | White/Black/Blue/Green/Yellow | 500 |
| D5 | 122 x 89 x 25mm | White | 1000 |
| D7 | 178 x 90 x 25mm | White/Black/Blue | 500 |
| D8 | 267 x 133 x 25mm | White/Black/Blue | 500 |
| D14 | 216 x 178 x 25mm | White/Black/Blue/Green/Yellow | 500 |
| D18 | 191 x 267 x 19mm | White/Black/Blue/Green/Yellow | 250 |
| ED2 | 178 x 133 x 35mm | White/Black/Blue | 500 |
| ED3 | 222 x 133 x 35mm | White/Black/Blue | 500 |
| J1 | 250 x 175 x 38mm | White | 500 |
| J3 | 267 x 235 x 38mm | White/Black/Blue/Yellow | 250 |
| J4 | 318 x 235 x 38mm | White/Black/Blue/Yellow | 250 |
| C1 | 178 x 100 x 25mm | White | 500 |
| C2 | 178 x 133 x 38mm | White | 500 |
| C3 | 222 x 133 x 38mm | White | 500 |
| PT3 | 220 x 95 x 160mm | White/Blue/Yellow | 500 |



Our EPS Food Trays are designed for food use and are widely used within the butchery and food service industries. Often wrapped using our over wrapping film and over wrapper to create a retail meat pack. Our trays are available in a range of complementary colours as listed.

LINSTAR EPS MEAT TRAYS

| Code | Size Metric | Available Colours | Qty |
|------|------------------|-------------------------------|------|
| D2 | 178 x 138 x 25mm | White/Blue/Green/Black | 1000 |
| D3 | 222 x 133 x 25mm | White/Black/Blue/Yellow/Green | 500 |
| D14 | 216 x 178 x 25mm | White/Black/Blue/Yellow/Green | 500 |
| D18 | 265 x 189 x 16mm | White/Blue/Black/Yellow | 500 |

CLINGFILM OVER WRAPPER



For our full range of butchers cling films, please see page 18



Linstar trays feature a unique system which eradicates the need for a separate soak pad. Each tray has holes which allow liquid to run through and soak into a section underneath the base



TRAY SEALING MACHINES

BARQ160 TRAY SEALING MACHINE

Our BARQ160 tray sealing machine seals all tray varieties up to 135 x 195mm and in one simple action trims the film across the back providing a hermetically sealed tray.

Includes: Manual operation, variable temperature control, all stainless steel, heat indicator lights, rubber feet for stability Just clean after use with a damp cloth.

Machine dimensions : 200mm x 460mm x 460mm

Maximum format of tray 135mm x 195mm / Maximum film width 160mm

Seals 10 trays per minute and requires a normal 13 Amp socket

No installation required - Just plug in, allow 10 minutes to heat up and start sealing your trays. Includes Manual



BARQ185 TRAY SEALING MACHINE

Our BARQ185 tray sealing machine seals all tray varieties up to 190 x 235mm and in one simple action trims the film across the back providing a hermetically sealed tray.

Includes: Manual operation, variable temperature control, all stainless steel, heat indicator lights, rubber feet for stability Just clean after use with a damp cloth.

Machine dimensions : 230mm x 490mm x 500mm

Maximum format of tray 190mm x 235mm / Maximum film width 185mm

Please also choose your forming plate to match your tray to this machine - Seals 10 trays per minute and requires a normal 13 Amp socket

No installation required - Just plug in, allow 10 minutes to heat up and start sealing your trays! – Includes Manual



DOT WELD LIDDING FILMS

| Roll Width | Roll Length | Qty |
|------------|-------------|------|
| 140mm | 500m | Roll |
| 150mm | 500m | Roll |
| 190mm | 500m | Roll |



CPET READY MEAL TRAYS

| Code | Size Metric | Qty | |
|--------------------|--------------------------------------|------------|---|
| CPET1166-1E | 165 x 116 x 36mm | 616 |  |
| 2155-1D | 156 x 127 x 38mm | 816 |  |
| 2171-1E 2171-1F | 171 x 127 x 40mm 171 x 127 x 50mm | 840 |  |
| 2187-1G 2187-1F | 187 x 137 x 44mm 187 x 137 x 40mm | 480 468 |  |
| 2187-2B | 187 x 137 x 45mm | 624 |  |
| 2200-1B 2200-1C | 200 x 155 x 45mm 200 x 155 x 35mm | 456 360 |  |
| 2220-1k | 220 x 130 x 38mm | 516 |  |
| 2227-1D 2227-1F | 228 x 179 x 50mm 228 x 179 x 59mm | 360 336 |  |
| 2227-2K | 228 x 179 x 43mm | 360 |  |
| 2227-3F | 228 x 179 x 44mm | 420 |  |
| 2325-1A | 325 x 265 x 50mm | 120 |  |

Our CPET range of trays are black, ovenable, microwaveable and freezable. The perfect solution for your ready meals!

They can withstand -40oC to 220oC. There are many different sizes including single, dual and three compartment tray options.

All trays will seal on our BARQ range of sealing machines and match our DOT WELD films

FOOD SERVICE DELIVERY BOXES

| Description | Thickness | Size |
|---------------------------|-----------|-------------------|
| 5kg Solid Board Box | 750gsm | 390 x 290 x 90mm |
| 5kg Solid Board Lid | 800gsm | 398 x 296 x 90mm |
| 10kg Solid Board Box | 880gsm | 500 x 299 x 100mm |
| 10kg Solid Board Lid | 680gsm | 506 x 305 x 100mm |
| Half Euro Solid Board Box | 915gsm | 380 x 290 x 140mm |
| Half Euro Solid Board Lid | 890gsm | 390 x 300 x 140mm |
| Euro Solid Board Box | 990gsm | 580 x 380x 150mm |
| Euro Solid Board Lid | 990gsm | 588 x 388 x 150mm |



FRUIT & PYO PUNNETS

| Code | Description | Capacity | Size | Qty |
|------|-------------------|----------|-------------------|------|
| B23 | Clear Punnet | 250g | 142 x 94 x 52mm | 2600 |
| B22 | Clear Punnet | 500g | 187 x 115 x 58mm | 1300 |
| B22 | Clear Punnet | 750g | 187 x 115 x 75mm | 1000 |
| B27 | Clear Punnet | 1000g | 277 x 186 x 70mm | 320 |
| B22 | Clear Slotted Lid | - | To Fit B22 Punnet | 1000 |
| B23 | Clear Slotted Lid | - | To Fit B23 Punnet | 1000 |



SAUSAGE SEASONINGS

| Description | Pack Qty |
|--------------------------|----------|
| Tinted Pork Seasoning | 6.36kg |
| Plain Pork Seasoning | 6.36kg |
| Cumberland Seasoning | 6.36kg |
| Old English Seasoning | 6.36kg |
| Lincolnshire Seasoning | 6.36kg |
| Cambridgeshire Seasoning | 6.36kg |



Our range of mixes and seasonings are produced using the highest quality ingredients and are used by the UK's top food manufacturers, foodservice operators and major retailers

What the manufacturer says

'We source from all over the world to ensure every taste request can be satisfied, whilst also ensuring the highest quality products are used and all technical demands are met. Whether you are a leading international food manufacturer or a smaller, local manufacturer you will always receive the same impeccable service and high quality products'



SAUSAGE MIXES

| Description | Pack Qty |
|------------------------------|------------|
| Beef Sausage Mix | 8 x 1.36kg |
| Cracked Black Pepper Mix | 8 x 1.36kg |
| Cumberland Mix | 12 x 907g |
| Fanfare Mix | 8 x 1.36kg |
| Ginger & Leek Mix | 8 x 1.36kg |
| Gluten Free Mix | 8 x 1.36kg |
| Hickory Smoke Mix | 8 x 1.36kg |
| Honey Mix | 8 x 1.36kg |
| Hot Spanish Mix | 8 x 1.36kg |
| Hot & Spicy Mix | 8 x 1.36kg |
| Kentish Hop Mix | 8 x 1.36kg |
| Lamb & Mint Mix | 8 x 1.36kg |
| Merguez Mix | 8 x 1.36kg |
| Old English Mix | 8 x 1.36kg |
| Organic Mix | 8 x 1.36kg |
| Pork & Apple Mix | 8 x 1.36kg |
| Pork & Chive Mix | 8 x 1.36kg |
| Pork & Garlic Mix | 8 x 1.36kg |
| Pork & Leek Mix | 8 x 1.36kg |
| Poultry & Game Mix | 8 x 1.36kg |
| Romany Mix | 8 x 1.36kg |
| Sage & Red Onion Mix | 8 x 1.36kg |
| Sun Dried Tomato & Basil Mix | 8 x 1.36kg |
| Sweet Chilli Mix | 8 x 1.36kg |
| Toulouse Mix | 8 x 1.36kg |



BURGER MIXES

| Description | Pack Qty |
|--------------------------|------------|
| Tasty Burger Mix | 8 x 1.36kg |
| Tasty Burger & Onion Mix | 8 x 1.36kg |
| Pork & Apple Mix | 8 x 1.36kg |
| Lamb & Mint | 8 x 1.36kg |
| American Burger | 8 x 1.36kg |
| Vegetable Burger | 8 x 1.36kg |
| Gladiator Burger | 8 x 1.36kg |
| Burger 80+ | 8 x 1.36kg |

LUCAS MIXES

| Description | Pack Qty |
|------------------------------------|-----------|
| Lucas Honey Roast Pork Tinted | 56 x 227g |
| Lucas Superbloom Plain Pork | 56 x 227g |
| Lucas Lincolnshire Sausage Mix | 5 x 567g |
| Lucas Old Mercian Seasoning | 15kg |
| Lucas Cumberland Sausage Mix | 5 x 510g |
| Lucas Olde English Sausage Mix | 5 x 567g |
| Lucas Pork & Apple Mix | 5 x 567g |
| Lucas Pork & Leek Sausage Mix | 5 x 567g |
| Lucas Burger 80+ | 10 x 340g |
| Lucas Beef Seasoning | 5 x 227g |
| Lucas Toulouse Sausage Mix | 5 x 567g |
| Lucas Meatball Binder | 5kg |
| Lucas Gluten Free Burger Mix | 5 x 454g |
| Lucas Cracked Black Pepper Sausage | 5 x 567g |
| Lucas Beef & Onion Burger Mix | 8 x 340g |
| Lucas Sweet Chilli Sausage Mix | 5 x 567g |
| Lucas Tomato Sausage Mix | 8 x 794g |
| Lucas Flavourmaker Burger Mix | 24 x 340g |

Additional Lucas products available on request



THE FLAVA PEOPLE

MRC FLAVOUR GLAZES

| Description | Pack Qty |
|----------------------------|------------|
| Chinese Glaze | 2.5kg Tubs |
| Garden Mint Glaze | 2.5kg Tubs |
| Smokey BBQ Glaze | 2.5kg Tubs |
| Mexican Chilli Glaze | 2.5kg Tubs |
| Moroccan Glaze | 2.5kg Tubs |
| Mustard Coater | 2.5kg Tubs |
| Hot 'n' Spicy Glaze | 2.5kg Tubs |
| Tandoori Glaze | 2.5kg Tubs |
| Garlic Butter Glaze | 2.5kg Tubs |
| Italian Glaze | 2.5kg Tubs |
| Kofta Kebab Seasoning | 2.5kg Tubs |
| Southern BBQ Coater | 2.5kg Tubs |
| Spicy Grillstick Seasoning | 2.5kg Tubs |
| Sticky Maple Glaze | 2.5kg Tubs |
| Sweet Chilli & Lime Coater | 2.5kg Tubs |
| Honey Roast Glaze | 2.5kg Tubs |
| Aromatic Thai Marinade | 2.5kg Tubs |
| Piri Piri Glaze | 2.5kg Tubs |
| Cajun Glaze | 2.5kg Tubs |
| BBQ Glaze | 2.5kg Tubs |
| Tikka Glaze | 2.5kg Tubs |
| Lemon Pepper Coater | 2.5kg Tubs |
| Pepper Steak Coater | 2.5kg Tubs |
| Sweet & Sour Glaze | 2.5kg Tubs |
| Rosemary & Garlic Glaze | 2.5kg Tubs |



MFP FLAVOUR GLAZES

| Description | Pack Qty |
|-------------------------|-----------|
| Chinese Glaze | 10kg Tubs |
| Garden Mint Glaze | 10kg Tubs |
| Smokey BBQ Glaze | 10kg Tubs |
| Mexican Chilli Glaze | 10kg Tubs |
| Hot 'n' Spicy Glaze | 10kg Tubs |
| Tandoori Glaze | 10kg Tubs |
| Garlic Butter Glaze | 10kg Tubs |
| Italian Glaze | 10kg Tubs |
| Southern Fry Glaze | 10kg Tubs |
| Honey Roast Glaze | 10kg Tubs |
| Salt & Pepper Glaze | 10kg Tubs |
| Piri Piri Glaze | 10kg Tubs |
| Cajun Glaze | 10kg Tubs |
| Balti Glaze | 10kg Tubs |
| BBQ Glaze | 10kg Tubs |
| Tikka Glaze | 10kg Tubs |
| Lemon Pepper Glaze | 10kg Tubs |
| Pepper Steak Glaze | 10kg Tubs |
| Sweet & Sour Glaze | 10kg Tubs |
| Rosemary & Garlic Glaze | 10kg Tubs |
| Thai Glaze | 10kg Tubs |



Additional Leonards products available on request

Gluten Free Products



LEONARDS GLUTEN FREE SAUSAGE MIXES

Description

Premium Pork Mix
Cumberland Mix
Old English Mix
Pork & Leek Mix

With the Coeliac Society announcing a four fold increase in the number of Coeliac diagnoses over the last 20 years, we felt it was time to offer our customers a range of gluten free products to satisfy the demands of the market

Please enquire for sample packs

LEONARDS GLUTEN FREE BURGER MIXES

Description

Beef Burger Mix
Pork & Apple Mix
Beef & Onion Mix
Game Mix

ADDITIONAL BUTCHERY ITEMS

| Description | Pack Qty |
|---------------------------|----------|
| No 5 Rayon String | 6 rolls |
| No 6 Rayon String | 6 rolls |
| Rayon String Red/White | 6 rolls |
| 4" Burger Discs | 5000 |
| 5" Burger Discs | 5000 |
| Cutlet Frills | 200 |
| 4 x 6" Absorbent Pads | 1000 |
| 6" Kebab Sticks | 1000 |
| 10" Kebab Sticks | 1000 |
| 8" Roasting Net | 100m |
| Nylon Block Brush | Each |
| 6" Butchers Hook 'S' Type | x35 |
| Block Brush | Each |
| Red/White Noisette Bands | 1000 |
| Stockinette Roll 800g | Each |
| Stockinette Roll 2kg | Each |
| Provision Pins Small | 1000 |
| Provision Pins Large | 144 |



S Hooks



Cutlet Frills



Kebab Sticks

LEONARDS GLUTEN FREE FLAVA GLAZES

Description

BBQ Glaze
Peking Glaze
Mint Glaze

ADDITIONAL INGREDIENTS

| Description | Pack Qty |
|---------------------------|----------|
| Golden Bread Crumb | 5kg |
| Classic White Bread Crumb | 5kg |
| Rubbed Sage | 5kg |
| Super Salz Cure | 18kg |
| Salt | 25kg |
| Cracked Black Pepper | 5kg |
| Ground Black Pepper | 5kg |
| Decoration France | 900g |
| Black Pudding Cases | Pack |
| Black Pudding Mix | 10kg |

Knives – Steels

Butchers Clothing & Equipment

Food Machinery

All available on request



No. 5 Rayon

NATURAL HOG CASE BUNDLES

| Description | Size | Pack Qty |
|-----------------------|---------|------------|
| Hog Bundle Vac Packed | 28 - 30 | 10 Bundles |
| Hog Bundle Vac Packed | 32 - 34 | 10 Bundles |
| Hog Bundle Vac Packed | 34 - 36 | 10 Bundles |
| Hog Bundle Vac Packed | 35 - 38 | 10 Bundles |

High quality Dutch and British sausage casings supplied in tubs of 10 individually vacuum packed bundles. We recommend that each bundle is soaked for a minimum of 2 hours but ideally overnight before use



NATURAL TUBED HOG CASINGS

| Description | Size | Pack Qty |
|-----------------------|---------|------------|
| Tubed Hog Case Bundle | 35 - 38 | Per Bundle |

Additional sizes available on request

SHEEP BUNDLE CASES

| Description | Size | Pack Qty |
|-------------------------|---------|------------|
| Sheep Bundle Vac Packed | 18 - 22 | Per Bundle |
| Sheep Bundle Vac Packed | 20 - 22 | Per Bundle |
| Sheep Bundle Vac Packed | 22 - 24 | Per Bundle |

NATURAL TUBED SHEEP CASINGS

| Description | Size | Pack Qty |
|-------------------------|---------|------------|
| Tubed Sheep Case Bundle | 22 - 24 | Per Bundle |

Additional sizes available on request



RIPON RUSKS

| Description | Pack Qty |
|----------------------|----------|
| Ripon Pinhead Rusk | 25kg |
| Ripon Medium Rusk | 25kg |
| Ripon Superfine Rusk | 25kg |
| Ripon Pink Pinhead | 25kg |

Ripon rusk is one of the highest quality rusks on the market. Easy to use, rusk binds with water and seasoning to create the perfect sausage or burger mix.



HAND TOWELS, TOILET ROLLS AND DISPENSERS

| Product | Size | Case Quantity |
|--------------------------------|-------------|---------------|
| C/FOLD HAND TOWELS 1PLY | N/A | 2800 |
| C/FOLD HAND TOWELS 2PLY WHITE | N/A | 2400 |
| Z/FOLD HAND TOWELS 2PLY | N/A | 3045 |
| PERF MINI ROLL C/PULL TOWEL | N/A | 12 ROLLS |
| 2PLY BLUE/WHITE C/PULL TOWEL | 150MTR | 6 ROLLS |
| 2PLY WORKSHOP ROLL | 30CM X 400M | 2 ROLLS |
| 2PLY WHITE TOILET ROLLS | 320 SHEET | 36 ROLLS |
| 2PLY LUXURY WHITE TOILET ROLLS | 260 SHEET | 40 ROLLS |
| MINI JUMBO TOILET ROLL | 150M | 12 ROLLS |
| STANDARD C/PULL DISPENSER | N/A | 1 |
| MINI ROLL TOWEL DISPENSER | N/A | 1 |
| C/FOLD TOWEL DISPENSER | N/A | 1 |



C/PULL DISPENSER



C/PULL TOWEL



C/FOLD DISPENSER



C/FOLD TOWELS



WORKSHOP ROLL



THICK BLEACH



TOILET CLEANER



DEB DISPENSER

KITCHEN CHEMICALS

| Product | Size | Case Quantity |
|--------------------------------|-------|---------------|
| ANTIBAC SURFACE WIPES | N/A | 200 |
| ANTIBAC SURFACE SPRAY | 750ML | 6 |
| GLASS CLEANER SPRAY | 750ML | 6 |
| JANITOL ULTRA SANITISER | 5LTR | 2 |
| JANITOL FLOOR CLEANER | 5LTR | 2 |
| PINE DISINFECTANT | 5LTR | 2 |
| HARD SURFACE CLEANER | 5LTR | 2 |
| GENERAL PURPOSE WASH UP LIQUID | 5LTR | 2 |
| DISHWASHER DETERGENT | 5LTR | 2 |
| DISHWASHER RINSE AID | 5LTR | 2 |
| GLASS WASH DETERGENT | 5LTR | 2 |
| TOILET CLEANER | 1LTR | 6 |
| THICK BLEACH | 5LTR | 4 |

HAND HYGIENE

JANITORIAL: pg 31

| Product | Size | Case Quantity |
|-----------------------------------|------|---------------|
| FLORAFREE 2 STEP HYGIENE CENTRE | N/A | N/A |
| FLORAFREE CLEANSE DISPENSER | 1L | 1 |
| FLORAFREE SANITISE DISPENSER | 1L | 1 |
| FLORAFREE ANTIBAC SOAP REFILL | 1L | 6 |
| FLORAFREE SKIN SANITISER REFILL | 1L | 6 |
| FLORAFREE SKIN SANITISER PUMP | 1L | 6 |
| DEB WASHROOM SOAP DISPENSER | 1LTR | 1 |
| DEB AQUARESS ANTIBAC FOAMING SOAP | 1LTR | 6 |
| PINK PEARLISED HAND SOAP | 5LTR | 1 |



2 STEP HYGIENE BOARD



SKIN SANITISER



FLORAFREE SOAP REFILL

JANITORIAL ITEMS

| Product | Size | Case Quantity |
|------------------------|-----------|---------------|
| FLY SPRAY | 400ML | 1 |
| METAL SCOURER | N/A | 10 |
| KITCHEN J CLOTH | N/A | 50 |
| HEAVY DUTY REFUSE SACK | 18X29X39" | 200 |
| KENTUCKY MOP HEAD | 12OZ | 1 |
| SOCKET MOP HEAD | 12OZ | 1 |
| BLUE PLASTERS | VARIOUS | 100 |
| FIRST AID KIT | N/A | 1 |

GLOVES

| Product | Size | Case Quantity |
|----------------------------|-------------|---------------|
| VINYL GLOVES BLUE | SMALL | 100 |
| VINYL GLOVES BLUE | MEDIUM | 100 |
| VINYL GLOVES BLUE | LARGE | 100 |
| VINYL GLOVES BLUE | EXTRA LARGE | 100 |
| VINYL GLOVES POWDER FREE | SMALL | 100 |
| VINYL GLOVES POWDER FREE | MEDIUM | 100 |
| VINYL GLOVES POWDER FREE | LARGE | 100 |
| VINYL GLOVES POWDER FREE | EXTRA LARGE | 100 |
| NITRILE POWDER FREE GLOVES | SMALL | 100 |
| NITRILE POWDER FREE GLOVES | MEDIUM | 100 |
| NITRILE POWDER FREE GLOVES | LARGE | 100 |
| NITRILE POWDER FREE GLOVES | EXTRA LARGE | 100 |
| LATEX GLOVES CLEAR | SMALL | 100 |
| LATEX GLOVES CLEAR | MEDIUM | 100 |
| LATEX GLOVES CLEAR | LARGE | 100 |
| LATEX GLOVES CLEAR | EXTRA LARGE | 100 |



SOCKET MOP HEAD



VINYL GLOVES



KENTUCKY MOP HEAD

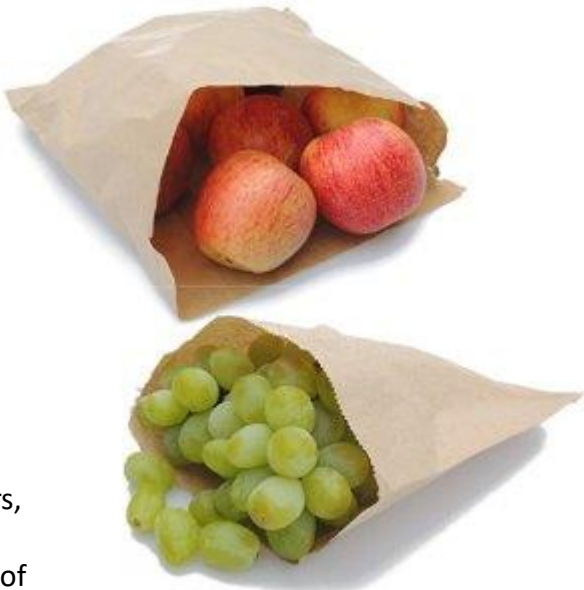
KRAFT PAPER BAGS (STRUNG)

| Size | Case Quantity |
|-----------------|---------------|
| 7 X 7" | 1000 |
| 7 X 9" | 1000 |
| 8.5 X 8.5" | 1000 |
| 8.5 X 11" | 1000 |
| 10 X 10" | 1000 |
| 12 X 12" | 500 |
| 10 X 10" YELLOW | 1000 |
| 12 X 12" YELLOW | 500 |
| 10 X 14" | 1000 |
| 13 X 14" | 500 |
| 14 X 18" | 500 |
| 17 X 19" | 500 |
| 19 X 21" | 500 |



Our yellow kraft bags are made from superior paper and are the premium choice for high street retailers

Widely used by fruiterers, market traders, supermarkets and high street retailers. These bags are supplied strung for ease of use and are a great method for packing food and non food items



KRAFT PAPER BAGS

BLOCK BOTTOM PAPER BAGS

| Size | To Take Weight | Case Quantity |
|-------------------|----------------|---------------|
| 150 X 60 X 300MM | 3.5LB | 250 |
| 175 X 290 X 345MM | 7LB | 250 |
| 200 X 315 X 475MM | 14LB | 125 |
| 250 X 390 X 550MM | 28LB | 125 |

These bags are made from thick kraft paper and are great for packing items such as bird seed and pet foods, or to use as a carry out bag



BLOCK BOTTOM BAGS



All of our paper bags are sustainably sourced

WHITE SULPHITE PAPER BAGS

| Size | Case Quantity |
|------------|---------------|
| 5 x 6" | 1000 |
| 6 x 6" | 1000 |
| 7 x 7" | 1000 |
| 7 x 9.5" | 1000 |
| 8.5 x 8.5" | 1000 |
| 10 x 10" | 1000 |
| 8.5 x 11" | 1000 |
| 12 x 12" | 500 |

The classic white sulphite bag used by many food retailers such as bakeries and delicatessens. These bags offer superb value for money and are an easy way to pack food items



WHITE SULPHITE



WHITE SULPHITE PAPER SATCHELS

| Size | Case Quantity |
|--------------------------|---------------|
| 4 X 6 X 14" BAGUETTE | 1000 |
| 4 X 6 X 26" FRENCH STICK | 1000 |
| 7 X 11 X 15" SMALL LOAF | 1000 |

Gusseted white bread satchels used for baguettes and small bread loaves



FILM FRONTED PAPER BAGS

| Size | Case Quantity |
|------------------------|---------------|
| 5 x 7" | 1000 |
| 7 x 7" | 1000 |
| 8.5 x 8.5" | 1000 |
| 10 x 10" | 1000 |
| 10 x 12" | 1000 |
| 12 x 12" | 1000 |
| 12 x 18" | 1000 |
| 20 x 30" | 50 |
| 4 X 6 X 14" (baguette) | 1000 |

Another classic bakery item. Each bag has a white paper backing with a clear film front. Ideal for packing and displaying food items such as filled rolls and pastries



FILM FRONT BAGS

FILM FRONTED PEARLIZED PAPER BAGS

| Size | Case Quantity |
|----------|---------------|
| 7 x 7" | 1000 |
| 8 x 8" | 1000 |
| 10 x 10" | 1000 |

Ideal for Samosas and pastry foods

All of our paper bags are sustainably sourced

GREASEPROOF PAPER BAGS

| Size | Case Quantity |
|------------|---------------|
| 7 X 7" | 1000 |
| 8.5 X 8.5" | 1000 |
| 10 X 10" | 1000 |

Manufactured from greaseproof paper, these bags are perfect for greasy food items such as chips, bacon baps and sausage rolls



FOIL LINED SACHEL

| Size | Case Quantity |
|-------------|---------------|
| 7 X 9 x 12" | 500 |

White paper bags that are foil lined to retain heat. Ideal for hot foods such as garlic bread, chicken wings and naan bread



SWEET BAGS

| Description | Size | Case Quantity |
|------------------|-------------------|---------------|
| POLY PROP SACHEL | 70 X 100 X 170MM | 1000 |
| POLY PROP SACHEL | 90 X 125 X 230MM | 1000 |
| POLY PROP SACHEL | 125 X 205 X 290MM | 1000 |
| PIC AND MIX BAG | 108 X 185 X 298MM | 500 |



Polypropylene satchels ideal for packaging and presenting sweets



Paper pic and mix bag with a ball and stripe design

WICKETED POLYPROP BAGS

| Size | Case Quantity |
|-------------|---------------|
| 150 X 250MM | 2000 |
| 150 X 350MM | 2000 |
| 200 X 250MM | 2000 |
| 250 X 300MM | 2000 |

Often referred to as 'snappy bags' our DA bags are widely used within the food processing industry for the packaging of cold foods. Use in conjunction with our impulse sealers (page 38)



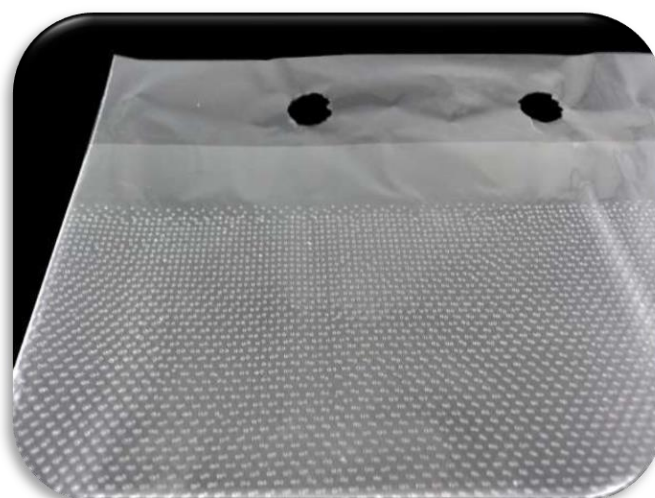
WICKETED POLYPROP BAGS

POLY BREAD SACHELS

| Description | Size | Case Quantity |
|------------------------------|--------------|---------------|
| P160 POLY PROP | 150 X 710MM | 2000 |
| P160 POLY PROP | 150 X 250MM | 2000 |
| P160 POLY PROP | 150 X 350MM | 2000 |
| P160 POLY PROP | 250 X 300MM | 2000 |
| P160 POLY PROP | 300 X 400MM | 2000 |
| P8 POLY PROP | 250 X 200MM | 2000 |
| POLY BREAD SACHEL | 6 X 10 X 18" | 1000 |
| POLY BREAD SACHEL | 8 X 12 X 22" | 1000 |
| POLY BREAD SACHEL PERFORATED | 8 X 12 X 22" | 1000 |



Our poly bread satchels are perfect for packing sliced and non sliced loaves



P160 Poly Prop bags are superb for fresh baked bread. Each bag is perforated with tiny holes which allow hot air to escape.

SELF SEAL CELLOPHANE BAGS

| Description | Size | Case Quantity |
|---------------------|-------------|---------------|
| SELF SEAL CELLO BAG | 75 X 125MM | 1000 |
| SELF SEAL CELLO BAG | 128 X 178MM | 1000 |
| SELF SEAL CELLO BAG | 165 X 222MM | 1000 |
| SELF SEAL CELLO BAG | 178 X 229MM | 2000 |
| SELF SEAL CELLO BAG | 207 X 283MM | 2000 |

These bags are perfectly clear and feature a self seal strip at the top and are perfect for gift cards, jewellery and craft items



FRUIT & VEG SHOP BAGS

POLY BAGS ON ROLL

| Description | Size | Case Quantity |
|--------------------------|--------------|---------------|
| GRANNY BAG ON ROLL | 9 X 14" | 10,000 |
| GRANNY BAG ON ROLL LARGE | 9 X 14 X 18" | 5,000 |
| LD CLEAR BAG ON ROLL | 9 X 14" | 5,000 |
| LD CLEAR BAG ON ROLL | 9 X 14 X 18" | 2,000 |
| PINCH PULL DISPENSER BAG | 8 X 12 X 17" | 9,000 |
| KNOT BAG ON ROLL 5KG | 9 X 14 X 18" | 5,000 |



GRANNY BAG ON ROLL

Popular with supermarkets and fruiterers . We supply a wide range of poly bags on the roll to suit your needs.



LD CLEAR BAG ON ROLL



KNOT BAG ON ROLL



KRAFT STRUNG BAGS
ARE AVAILABLE ON
PAGE 32

POTATO BAGS

| Description | Size | Case Quantity |
|--------------------|-------|---------------|
| PRINTED POTATO BAG | 1.5KG | 1,000 |
| PRINTED POTATO BAG | 2KG | 1,000 |
| PRINTED POTATO BAG | 2.5KG | 1,000 |
| PRINTED POTATO BAG | 5KG | 500 |

A great bag for pre packing potatoes. Each bag is printed with the weight of the contents.



CLEAR POLYTHENE BAGS

We can produce polythene bags to your size and print specification, just ask

POLYTHENE: pg 37

| Metric Size | Imperial Size | Available Gauges | Case Quantity |
|--------------|---------------|------------------------------|---------------|
| 100 x 150MM | 4 x 6" | 120g, 200g, 250g, 500g | 1000 |
| 125 x 175MM | 5 x 7" | 120g, 250g | 1000 |
| 150 x 200MM | 6 x 8" | 120g, 200g, 250g, 500g | 1000 |
| 175 x 225MM | 7 x 9" | 120G, 200G, 250G, 500G | 1000 |
| 200 X 250MM | 8 X 10" | 120G, 150G, 200G, 250G, 500G | 1000 |
| 200 X 300MM | 8 X 12" | 120G, 150G, 200G, 250G, 500G | 1000 |
| 225 X 300MM | 9 X 12" | 120G, 250G, 500G | 1000 |
| 250 X 300MM | 10 X 12" | 120G, 150G, 200G, 250G, 500G | 1000 |
| 250 X 375MM | 10 X 15" | 120G, 150G, 200G, 250G, 500G | 1000 |
| 300 X 375MM | 12 X 15" | 120G, 150G, 250G, 500G | 1000 |
| 300 X 450MM | 12 X 18" | 120G, 150G, 200G, 250G, 500G | 1000 & 500 |
| 375 X 500MM | 15 X 20" | 120G, 200G, 250G, 500G | 1000 & 250 |
| 450 X 600MM | 18 X 24" | 120G, 150G, 200G, 250G, 500G | 1000 & 250 |
| 500 X 750MM | 20 X 30" | 120G, 150G, 200G, 250G, 500G | 1000 & 100 |
| 600 X 900MM | 24 X 36" | 120G, 200G, 250G, 500G | 500 & 100 |
| 900 X 1200MM | 36 X 48" | 200G, 400G, 500G | 100 |

Food safe, but used for a wide variety of purposes . Our polythene bags come in a range of gauges and sizes to suit all needs. They can be sealed perfectly using a heat sealer.

PERFORATED POLYTHENE BAGS

| Metric Size | Imperial Size | Gauge | Case Quantity |
|-------------|---------------|-------|---------------|
| 225 X 300MM | 9 X 12" | 120G | 1000 |
| 250 X 375MM | 10 X 15" | 120G | 1000 |
| 300 X 375MM | 12 X 15" | 120G | 1000 |
| 300 X 450MM | 12 X 18" | 120G | 1000 |

Superb bags for pre packing fruit and veg. Each bag is perforated with small holes to keep your products fresh



WATERTIGHT POLYTHENE FISH BAGS

| Metric Size | Imperial Size | Gauge | Case Quantity |
|-------------|---------------|-------|---------------|
| 175 X 350MM | 7 X 14" | 150G | 1000 |
| 200 X 400MM | 8 X 16" | 200G | 1000 |
| 200 X 600MM | 8 X 24" | 200G | 1000 |
| 250 X 500MM | 10 X 20" | 210G | 500 |
| 250 X 645MM | 10 X 25" | 300G | 250 |
| 300 X 600MM | 12 X 24" | 250G | 250 |



Our Grip Seal bags are the perfect multi-use packaging item. Food safe and reusable these bags feature a grip top design for easy sealing.

GRIP SEAL BAGS

| Metric Size | Imperial Size | Gauge | Case Quantity |
|-------------|----------------|-------|---------------|
| 37 X 62MM | 1.5 X 2.5" | 160G | 1000 |
| 56 X 56MM | 2.25 X 2.25" | 160G | 1000 |
| 56 X 75MM | 2.25 X 3" | 160G | 1000 |
| 75 X 80MM | 3 X 3.25" | 160G | 1000 |
| 88 X 112MM | 3.5 X 4.5" | 160G | 1000 |
| 112 X 112MM | 4.5 X 4.5" | 160G | 1000 |
| 100 X 137MM | 4 X 5.5" | 160G | 1000 |
| 137 X 137MM | 5.5 X 5.5" | 160G | 1000 |
| 125 X 187MM | 5 X 7.5" | 160G | 1000 |
| 75 X 187MM | 3 X 7.5" | 160G | 1000 |
| 187 X 187MM | 7.5 X 7.5" | 160G | 1000 |
| 150 X 225MM | 6 X 9" | 180G | 1000 |
| 200 X 275MM | 8 X 11" | 180G | 1000 |
| 228 X 320MM | 9 x 12.75" | 180G | 1000 |
| 320 X 320MM | 12.75 x 12.75" | 180G | 1000 |
| 250 X 350MM | 10 X 14" | 180G | 1000 |
| 275 X 400MM | 11 X 16" | 180G | 1000 |
| 325 X 450MM | 13 X 18" | 180G | 1000 |
| 375 X 500MM | 15 X 20" | 180G | 1000 |

WRITE ON PANEL GRIP SEAL BAGS

| Metric Size | Imperial Size | Gauge | Case Quantity |
|-------------|----------------|-------|---------------|
| 37 X 62MM | 1.5 X 2.5" | 160G | 1000 |
| 56 X 56MM | 2.25 X 2.25" | 160G | 1000 |
| 56 X 75MM | 2.25 X 3" | 160G | 1000 |
| 75 X 80MM | 3 X 3.25" | 160G | 1000 |
| 88 X 112MM | 3.5 X 4.5" | 160G | 1000 |
| 112 X 112MM | 4.5 X 4.5" | 160G | 1000 |
| 100 X 137MM | 4 X 5.5" | 160G | 1000 |
| 137 X 137MM | 5.5 X 5.5" | 160G | 1000 |
| 125 X 187MM | 5 X 7.5" | 160G | 1000 |
| 75 X 187MM | 3 X 7.5" | 160G | 1000 |
| 187 X 187MM | 7.5 X 7.5" | 160G | 1000 |
| 150 X 225MM | 6 X 9" | 180G | 1000 |
| 200 X 275MM | 8 X 11" | 180G | 1000 |
| 228 X 320MM | 9 x 12.75" | 180G | 1000 |
| 320 X 320MM | 12.75 x 12.75" | 180G | 1000 |
| 250 X 350MM | 10 X 14" | 180G | 1000 |
| 275 X 400MM | 11 X 16" | 180G | 1000 |
| 325 X 450MM | 13 X 18" | 180G | 1000 |
| 375 X 500MM | 15 X 20" | 180G | 1000 |



WRITE ON PANEL
GRIP SEAL BAG

LAYFLAT TUBING

| Roll Width | Available Gauges |
|------------|-------------------------|
| 1" | 250G, 500G |
| 1.5" | 250G, 500G |
| 2" | 250G, 500G |
| 2.5" | 250G, 500G |
| 3" | 150G, 250G, 500G |
| 4" | 150G, 250G, 500G, 1000G |
| 5" | 250G, 500G |
| 6" | 120G, 250G, 500G, 1000G |
| 7" | 160G, 250G, 500G |
| 8" | 120G, 250G, 500G, 1000G |
| 9" | 120G, 250G, 500G |
| 10" | 120G, 250G, 500G |
| 12" | 120G, 250G, 500G, 1000G |
| 14" | 120G, 250G, 500G |
| 16" | 120G, 250G, 500G |
| 18" | 250G, 500G, 1000G |
| 20" | 120G, 250G, 500G |
| 22" | 250G, 500G |
| 24" | 120G, 250G, 500G |
| 30" | 120G, 250G, 500G |
| 36" | 120G, 250G, 500G |
| 48" | 250G, 500G |

IMPULSE SEALERS

| Size | Cutter |
|------|-----------------|
| 8" | With or Without |
| 12" | With or Without |
| 16" | With or Without |

The perfect tool for sealing poly bags and lay flat tubing of all gauges, supplied with or without a cutter. Easy to use.



Layflat tubing can be used for a multitude of packaging applications, the most common of which include pipes, wood mouldings and curtain rails.

WHITE STRUNG TAGS

| Code | Size | Type | Case Qty |
|------|-----------|--------|----------|
| E001 | 7 x 14MM | STRUNG | 1000 |
| E21 | 24 X 15MM | STRUNG | 1000 |
| E22 | 27 X 18MM | STRUNG | 1000 |
| E23 | 29 X 18MM | STRUNG | 1000 |
| E24 | 35 X 22MM | STRUNG | 1000 |
| E25 | 35 X 28MM | STRUNG | 1000 |
| E27 | 54 X 35MM | STRUNG | 1000 |

Our white strung tags are popular with jewellers and gift shops alike. Each tag is individually strung with 7 different sizes available



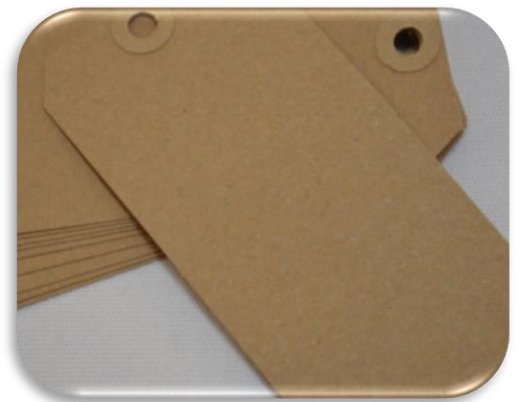
JEWELLERY TAGS

LUGGAGE LABELS

| Code | Size | Type | Case Qty |
|-------|------------|----------|----------|
| MS0 | 49 X 28MM | STRUNG | 1000 |
| MS1 | 70 X 35MM | STRUNG | 1000 |
| MS2 | 82 X 41MM | STRUNG | 1000 |
| MS3 | 96 X 48MM | STRUNG | 1000 |
| MS4 | 108 X 54MM | STRUNG | 1000 |
| MS5 | 120 X 60MM | STRUNG | 1000 |
| 12MU1 | 70 X 35MM | UNSTRUNG | 1000 |
| 12MU2 | 82 X 41MM | UNSTRUNG | 1000 |
| 12MU3 | 96 X 48MM | UNSTRUNG | 1000 |
| 12MU4 | 108 X 54MM | UNSTRUNG | 1000 |
| 12MU6 | 134 X 67MM | UNSTRUNG | 1000 |



LUGGAGE LABELS

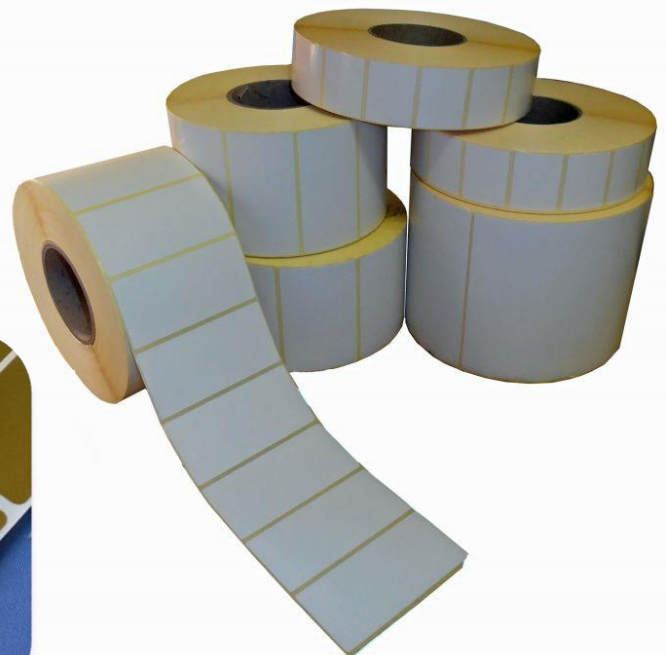
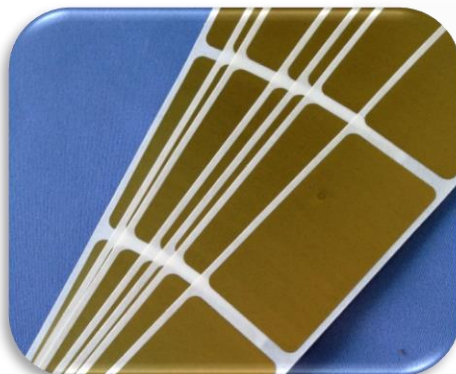


Brown luggage labels that are popular with craft shops and gift shops. Available strung or unstrung in a variety of sizes

ADHESIVE LABELS

| Size | Type | Roll Qty |
|--------|-----------------|----------|
| 2 x 1" | WHITE PERMANENT | 2500 |
| 2 X 1" | GOLD PERMANENT | 2500 |
| 3 X 2" | WHITE PERMANENT | 1500 |
| 4 X 2" | WHITE PERMANENT | 1500 |

Plain permanent adhesive labels that are also available for short run custom printing



ADHESIVE LABELS

DUMBBELL JEWELLERY LABEL

| Description | Roll Qty |
|----------------|----------|
| DUMBBELL LABEL | 1000 |

This adhesive label wraps around a ring, necklace or bracelet and sticks to itself. A price can then be written on either side



DUMBBELL LABEL

SMALL WHITE RECTANGULAR LABELS

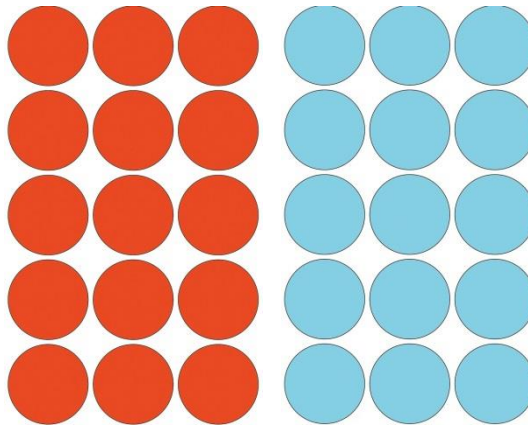
| Size | Colour | Roll Qty |
|-----------|--------|----------|
| 20 X 12MM | WHITE | 1000 |
| 19 X 19MM | WHITE | 1000 |



WHITE RECTANGULAR LABELS

ROUND LABELS

| Colour | Size | Type | Roll Qty |
|--------|------|-------|----------|
| WHITE | 10MM | ROUND | 1000 |
| RED | 20MM | ROUND | 1000 |
| BLUE | 20MM | ROUND | 1000 |
| WHITE | 25MM | ROUND | 1000 |



ROUND LABELS

REDUCED LABELS

| Description | Roll Qty |
|----------------------------------|----------|
| YELLOW 'REDUCED TO CLEAR' LABEL | 1000 |
| RED '50% OFF MARKED PRICE' LABEL | 1000 |
| REDUCED 24 QUICK SALE LABEL | 1000 |

SHIPPING LABELS

| Description | Label Size | Qty On Roll |
|---|------------|-------------|
| FRAGILE | 89X32MM | 1000 |
| DO NOT CRUSH | 148X50MM | 500 |
| DOCUMENTS ENCLOSED | 83X32MM | 1000 |
| DO NOT BEND | 89X32MM | 1000 |
| GLASS | 89X32MM | 1000 |
| SOLD | 89X32MM | 1000 |
| DO NOT USE SHARPS OPEN WITH CARE | 148X50MM | 500 |
| HANDLE WITH CARE | 89X32MM | 1000 |



50% OFF MARKED PRICE



REDUCED TO CLEAR



REDUCED TO FOR QUICK SALE

TILL & CARD MACHINE ROLLS

| Size | Paper Type | Case Quantity |
|-----------|------------|---------------|
| 44 X 80MM | A GRADE | 40 ROLLS |
| 37 X 70MM | A GRADE | 20 ROLLS |
| 57 X 58MM | A GRADE | 20 ROLLS |
| 76 X 76MM | A GRADE | 20 ROLLS |
| 57 x 40MM | THERMAL | 20 ROLLS |
| 57 X 55MM | THERMAL | 20 ROLLS |
| 44 X 80MM | THERMAL | 20 ROLLS |
| 50 X 70MM | THERMAL | 20 ROLLS |
| 57 X 70MM | THERMAL | 20 ROLLS |
| 80 X 80MM | THERMAL | 20 ROLLS |



**We also stock a wide range of
Till Inks and Ribbons**

PRICE GUN LABELS

| Description/ Size | Case Quantity |
|---|---------------|
| CT4 WHITE PUMA/METO FREEZE PEEL 26 X 12MM | 45,000 |
| CT4 PEACH PUMA/METO FREEZE PEEL 26 X 12MM | 45,000 |
| CT4 WHITE PUMA/METO LABEL PRINTED 'USE BY' | 15,000 |
| CT4 WHITE PUMA/METO LABEL PRINTED 'BEST BEFORE' | 15,000 |
| CT4 WHITE PUMA/METO PERM 26 X 12MM | 45,000 |
| CT7 WHITE LABEL 26 X 16MM | 30,000 |
| NOR D WHITE LABEL | 45,000 |
| NOR B WHITE LABEL | 45,000 |
| R105 WHITE 26 X 12MM LABEL | 15,000 |
| CT1 PUMA/LYNX SQUARE LABEL WHITE | 10,000 |
| CT1 PUMA/LYNX SQUARE LABEL YELLOW | 10,000 |
| CT1 PUMA/LYNX SQUARE LABEL ORANGE | 10,000 |



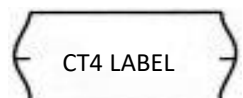
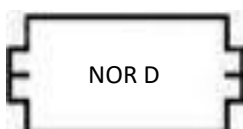
57x40mm Thermal Roll – suitable for
the majority of card terminals

PRICE GUNS

| Description/ Size | Case Quantity |
|---------------------------|---------------|
| PUMA PJ6 PRICE GUN 6 LINE | EACH |
| PUMA PJ8 PRICE GUN 8 LINE | EACH |



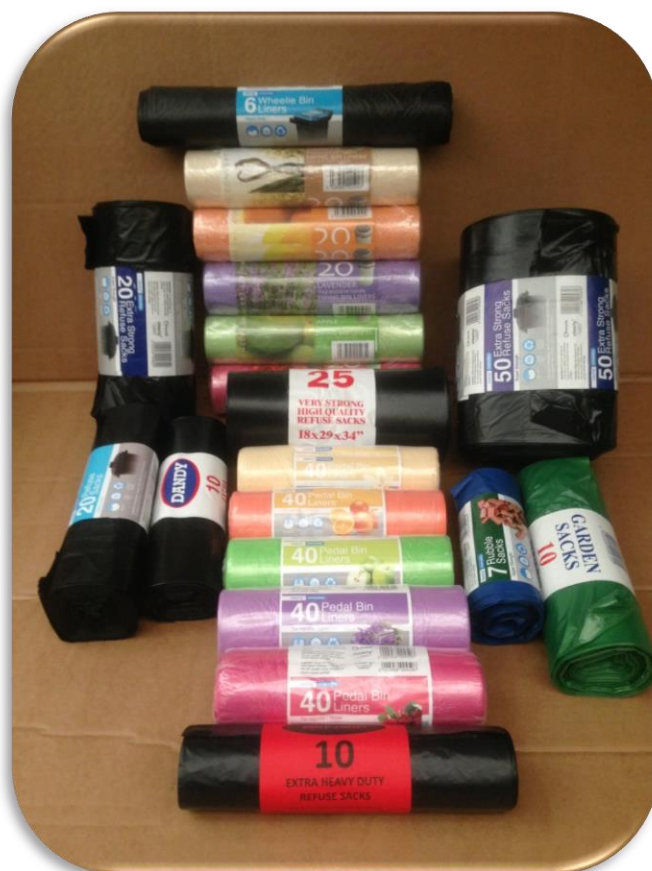
PUMA PRICE GUN



RETAIL REFUSE SACKS

| Description | Size | Case Quantity |
|---------------------------------|---------------------|---------------|
| 10 ROLL GREEN GARDEN SACK | 740 X 990MM | 20 ROLLS |
| 10 ROLL POLYLION BLACK SACK | 457 X 710 X 840MM | 20 ROLLS |
| 20 ROLL EX STRONG EX LONG SACK | 457 X 710 X 950MM | 10 ROLLS |
| 50 ROLL EX STRONG EX LONG SACK | 457 X 710 X 950MM | 4 ROLLS |
| 10 ROLL DANDY BLACK SACK | 457 X 710 X 840MM | 20 ROLLS |
| 25 ROLL WORTHMINSTER BLACK SACK | 457 X 710 X 840MM | 8 ROLLS |
| 25 ROLL SWING BIN LINER SCENTED | 400 X 600 X 880MM | 20 ROLLS |
| 6 ROLL WHEELIE BIN LINER | 300 X 1150 X 1425MM | 20 ROLLS |
| 25 ROLL PEDAL BIN LINER SCENTED | 305 X 455 X 600MM | 40 ROLLS |
| 7 ROLL RUBBLE SACK 500G | 500 X 700MM | 20 ROLLS |

All of our refuse sacks on the roll come prepacked and barcoded ready for retail, please feel free to contact us for samples and prices



LOOSE PACKED REFUSE SACKS

| Description | Size | Case Quantity |
|---------------------------|--------------------|---------------|
| ZAMBESI BLACK SACK 180G | 460 X 740 X 990MM | 200 SACKS |
| ORINOCO BLACK SACK 200G | 457 X 710 X 990MM | 200 SACKS |
| BLACK COMPACTOR SACK 300G | 550 X 825 X 1175MM | 100 SACKS |
| RED/BLUE SACK 160G | 457 X 710 X 990MM | 200 SACKS |
| BLUE RUBBLE SACK 480G | 500 X 750MM | 100 SACKS |



DEGRADABLE CADDY LINER

| Description | Size | Case Quantity |
|--|-------------|---------------|
| 26 ROLL 7 LITRE DEGRADABLE CADDY LINER | 420 X 350MM | 40 ROLLS |

Made from corn starch so 100% biodegradable and compostable. Now a staple part of many household council waste collection systems



SINGLE WALL STOCK BOXES 0201 GLUED

| Metric Size | Imperial Size | Grade |
|--------------------|----------------------|------------|
| 102 x 102 x 102 MM | 4 X 4 X 4" | 125KTB |
| 127 X 127 X 127 MM | 5 X 5 X 5" | 125KTB |
| 152 X 152 X 152 MM | 6 X 6 X 6" | 125KTB |
| 178 X 127 X 127 MM | 7 X 5 X 5" | 125KTB |
| 178 X 178 X 178 MM | 7 X 7 X 7" | 125KTB |
| 203 X 152 X 102 MM | 8 X 6 X 4" | 125KTB |
| 203 X 152 X 152 MM | 8 X 6 X 6" | 125KTB |
| 203 X 203 X 203 MM | 8 X 8 X 8" | 125KTB |
| 229 X 152 X 152 MM | 9 X 6 X 6" | 125KTB |
| 241 X 241 X 114 MM | 9.5 X 9.5 X 4.5" | 125KTB |
| 229 X 229 X 229 MM | 9 X 9 X 9" | 125KTB |
| 254 X 203 X 152 MM | 10 X 8 X 6" | 125KTB |
| 254 X 254 X 254 MM | 10 X 10 X 10" | 125KTB |
| 267 X 241 X 102 MM | 10.5 X 9.5 X 4" | 150W/125TB |
| 305 X 229 X 76 MM | 12 X 9 X 3" | 125KTB |
| 305 X 229 X 102 MM | 12 X 9 X 4" | 125KTB |
| 305 X 229 X 127 MM | 12 X 9 X 5" | 125KTB |
| 305 X 229 X 152 MM | 12 X 9 X 6" | 125KTB |
| 305 X 229 X 178 MM | 12 X 9 X 7" | 125KTB |
| 305 X 229 X 229 MM | 12 X 9 X 9" | 125KTB |
| 305 X 229 X 305 MM | 12 X 9 X 12" | 125KTB |
| 343 X 241 X 114 MM | 13.5 X 9.5 X 4.5" | 125KTB |
| 330 X 254 X 318 MM | 13 X 10 X 12.5" | 125KTB |
| 350 X 279 X 229 MM | 14 X 11 X 9" | 125KTB |
| 407 X 307 X 124 MM | 16 X 12 X 5" | 125KTB |
| 432 X 267 X 127 MM | 17 X 10.5 X 5" | 125KTB |
| 457 X 305 X 178 MM | 18 X 12 X 7" | 125KTB |
| 457 X 305 X 254 MM | 18 X 12 X 10" | 125KTB |
| 457 X 305 X 305 MM | 18 X 12 X 12" | 125KTB |
| 482 X 305 X 127 MM | 19 X 12 X 5" | 125KTB |
| 532 X 305 X 125 MM | 21 X 12 X 5" | 125KTB |
| 575 X 370 X 365 MM | 22.5 X 14.5 X 14.33" | 150KTB |
| 600 X 407 X 532 MM | 23.5 X 16 X 21" | 175KTB |
| 635 X 477 X 565 MM | 25 X 18.75 X 22.25" | 140TL2 |
| 650 X 455 X 560 MM | 25.5 X 18 X 22" | 200KTB |



SINGLE WALL BOX



MAIL READY PACKS

| Description | Metric Size |
|-----------------|-------------------|
| SMALL WRAP | 243 X 163 X 39 MM |
| MEDIUM WRAP | 305 X 215 X 39 MM |
| LARGE A4 WRAP | 335 X 253 X 45 MM |
| X-LARGE A3 WRAP | 455 X 305 X 59 MM |
| 12" BOOK WRAP | 320 X 320 X 40 MM |



MAIL READY PACK

Multipurpose packaging ideal for sending books, catalogues, CD's, DVD's and other media, safely and securely through the post. Manufactured from recycled corrugated board, these wrappers are available in several standard sizes and styles, to accommodate a variety of products

PIP BOXES

| Description | Metric Size |
|------------------|------------------|
| PIP1 DIE CUT BOX | 160 X 110 X 20MM |
| PIP2 DIE CUT BOX | 222 X 160 X 20MM |
| PIP3 DIE CUT BOX | 322 X 229 X 20MM |



Our PiP (pricing in proportion) postal boxes are designed to adhere to the Large Letter size of the Royal Mail parcel pricing structure

This equates to a maximum sizing of 350 x 250 x 25mm and a maximum weight limit of 750g and will fit through a standard UK letter box

POSTAL BOXES

| Description | Metric Size |
|-----------------|-------------------|
| PB1 POSTAL BOX | 150 X 60 X 40MM |
| PB2 POSTAL BOX | 140 X 130 X 50MM |
| PB3 POSTAL BOX | 130 X 110 X 90MM |
| PB4 POSTAL BOX | 200 X 120 X 50MM |
| PB5 POSTAL BOX | 250 X 120 X 50MM |
| PB6 POSTAL BOX | 270 X 180 X 80MM |
| PB7 POSTAL BOX | 300 X 240 X 100MM |
| PB8 POSTAL BOX | 420 X 260 X 50MM |
| SMPARCEL BOX 01 | 419 X 338 X 72MM |
| SMPARCEL BOX 02 | 348 X 250 X 72MM |

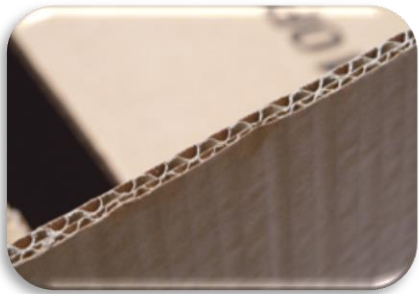


DOUBLE WALL STOCK BOXES 0201 GLUED

| Metric Size | Imperial Size | Grade |
|--------------------|--------------------|----------|
| 254 X 254 X 254 MM | 10 X 10 X 10" | 125KT/BC |
| 305 x 229 x 127 MM | 12 x 9 x 5" | 125KT/BC |
| 305 X 229 X 152 MM | 12 X 9 X 6" | 125KT/BC |
| 305 X 229 X 229 MM | 12 X 9 X 9" | 125KT/BC |
| 305 X 305 X 305 MM | 12 X 12 X 12" | 125KT/BC |
| 355 X 260 X 305 MM | 14 X 10.25 X 12" | 125KT/BC |
| 355 X 355 X 355 MM | 14 X 14 X 14" | 125KT/BC |
| 406 X 406 X 406 MM | 16 X 16 X16" | 125KT/BC |
| 457 X 305 X 254 MM | 18 X 12 X 10" | 125KT/BC |
| 457 X 305 X 305 MM | 18 X 12 X 12" | 125KT/BC |
| 457 X 457 X 457 MM | 18 X 18 X18" | 125KT/BC |
| 457 X 457 X 508 MM | 18 X18 X 20" | 125KT/BC |
| 457 X 457 X 762 MM | 18 X 18 X 30" | 125KT/BC |
| 508 X 508 X 508 MM | 20 X 20 X 20" | 125KT/BC |
| 555 X 320 X 435 MM | 22 X 12.5 X 17" | 150KT/BC |
| 584 X 381 X 343 MM | 23 X 15 X 13.5" | 125KT/BC |
| 585 X 285 X 370 MM | 23 X 11 X 14.5" | 125KT/BC |
| 565 X 355 X 370 MM | 22.25 X 14 X 14.5" | 125KT/BC |
| 565 X 355 X 560 MM | 22.25 X 14 X 22" | 125KT/BC |
| 610 X 457 X 457 MM | 24 X 18 X 18" | 125KT/BC |
| 610 X 610 X 610 MM | 24 X 24 X 24" | 125KT/BC |
| 762 X 457 X 457 MM | 30 X 18 X 18" | 125KT/BC |
| 762 X 508 X 508 MM | 30 X 20 X 20" | 125KT/BC |
| 762 X 762 X 762 MM | 30 X 30 X 30" | 200KT/BC |
| 890 X 762 X 508 MM | 35 X 30 X 20" | 200KT/BC |
| 915 X 483 X 279 MM | 36 X 18 X 10" | 150KT/BC |
| 915 X 915 X 915 MM | 36 X 36 X 36" | 200KT/BC |
| 610 X 254 X 787 MM | 24 X 10 X 31" | 150KT/BC |
| 990 X 255 X 320 MM | 39 X 10 X 12.5" | 150KT/BC |
| 915 X 610 X 635 MM | 36 X 24 X 25" | 150KT/BC |



DOUBLE WALL BOX



REAM BOXES

| Description | Metric Size | Colour |
|-------------|-------------------|---------|
| A4 REAM BOX | 305 X 229 X 64 MM | BROWN |
| A4 REAM BOX | 305 X 229 X 63 MM | WHITE |
| A4 REAM BOX | 216 X 165 X 51 MM | PLASTIC |
| A5 REAM BOX | 216 X 165 X 51 MM | BROWN |
| A5 REAM BOX | 216 X 165 X 51 MM | WHITE |



REAM BOX

COMPLIMENT SLIP BOXES

| Description | Metric Size | Colour | Box Qty |
|----------------------|-------------------|--------|---------|
| 1/3 A4 COMP SLIP BOX | 216 X 102 X 64 MM | BROWN | 100 |
| 1/3 A4 COMP SLIP BOX | 216 X 102 X 64 MM | WHITE | 100 |
| 1/3 A4 COMP SLIP BOX | 214 X 104 X 51 MM | CLEAR | 100 |



COMPLIMENT SLIP BOX

ARCHIVE BOX

| Description | Metric Size |
|-------------|--------------------|
| ARCHIVE BOX | 470 X 355 X 275 MM |
| ARCHIVE BOX | 377 X 265 X 315 MM |
| ARCHIVE BOX | 359 X 283 X 240 MM |
| ARCHIVE BOX | 359 X 283 X 160 MM |



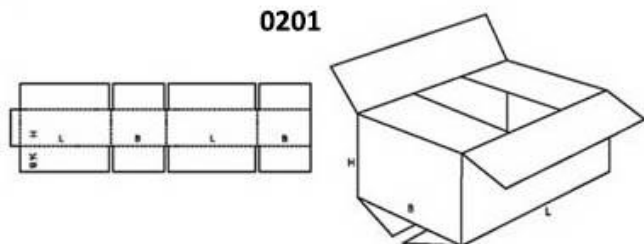
ARCHIVE BOX

BESPOKE CARTONS

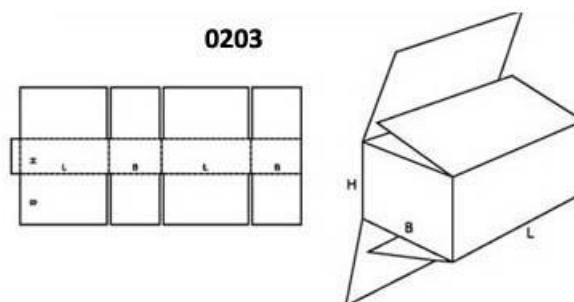
We have the ability to produce bespoke cartons to your specification. Whether it's printed, plain or die-cut, contact us for a fast and competitive quote

FEFCO BOX STYLES

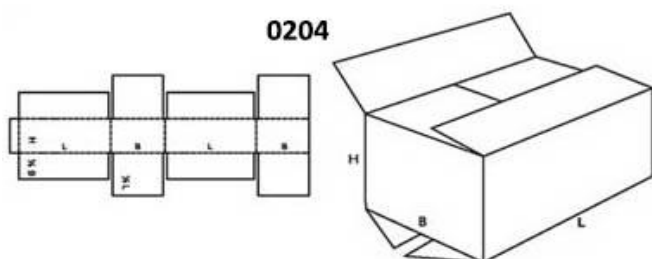
0201



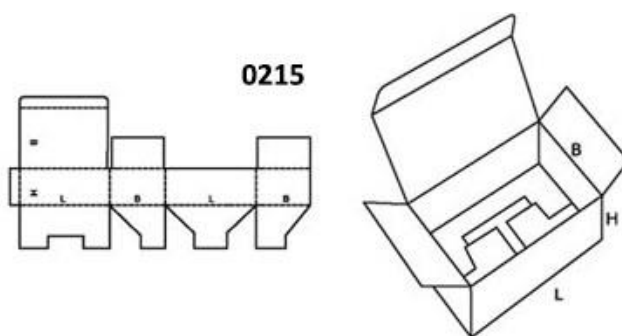
0203



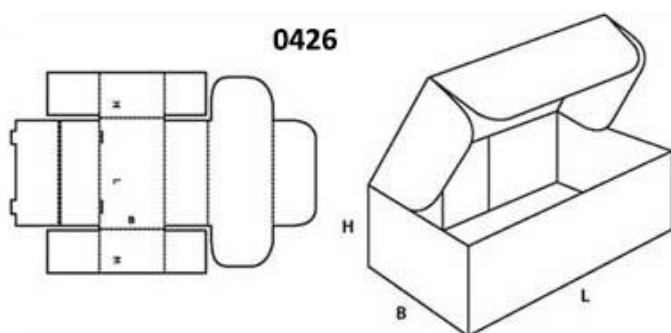
0204



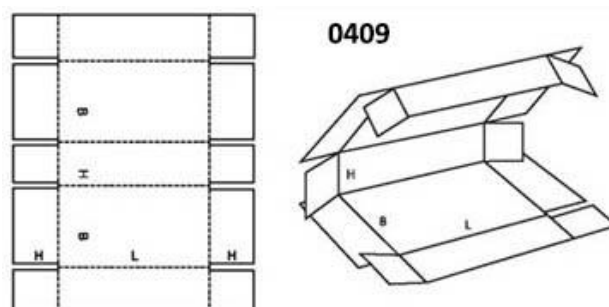
0215



0426



0409

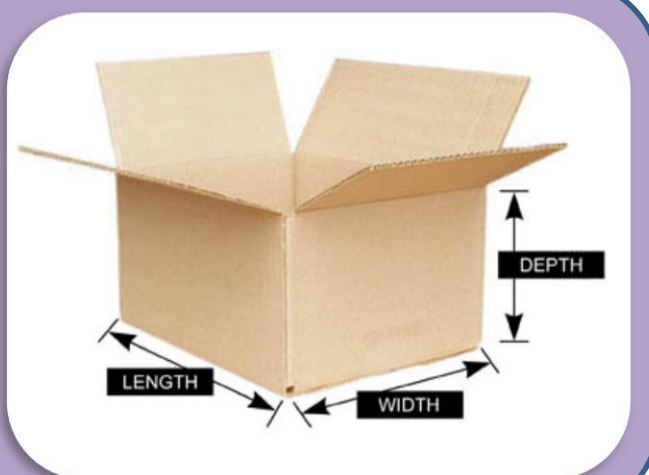


MEASURING A BOX

It is important to know the correct method when measuring boxes so that we are able to provide you with the correct size.

Dimensions are usually measured internally and presented in millimetres

Length (L) x Width (W) x Height/Depth (H/D)



MAIL LITE BUBBLE LINED MAILING BAGS

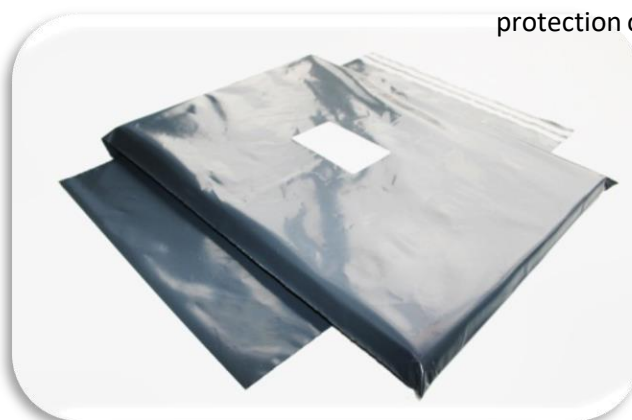
| Code | Size | Case Quantity |
|-------|-------------|---------------|
| A/000 | 110 X 160MM | 100 |
| B/00 | 120 X 210MM | 100 |
| C/0 | 150 X 210MM | 100 |
| D/1 | 180 X 260MM | 100 |
| E/2 | 220 X 260MM | 100 |
| F/3 | 220 X 330MM | 50 |
| G/4 | 240 X 330MM | 50 |
| H/5 | 270 X 360MM | 50 |
| J/6 | 300 X 400MM | 50 |
| K/7 | 350 X 470MM | 50 |



An economical practical and lightweight postal bag. Fully lined barrier sealed bubble for superior protection. Self-seal strip on top flap saves time in a busy packing department/post room. High slip film for easy insertion. Easy to write on with excellent label adhesion

JIFFY PADDED BAGS

| Code | Size | Case Quantity |
|------|-------------|---------------|
| 000 | 102 X 203MM | 250 |
| 00 | 107 X 235MM | 200 |
| 0 | 132 X 235MM | 200 |
| 1 | 164 X 285MM | 100 |
| 2 | 196 X 285MM | 100 |
| 3 | 196 X 350MM | 100 |
| 4 | 221 X 350MM | 100 |
| 5 | 247 X 387MM | 100 |
| 6 | 298 X 464MM | 50 |
| 7 | 336 X 489MM | 50 |
| 8 | 437 X 666MM | 50 |



EM BUBBLE LINED MAILERS

| Code | Size | Case Quantity |
|---------|-------------|---------------|
| EMA/000 | 105 X 165MM | 100 |
| EMB/00 | 115 X 220MM | 100 |
| EMC/0 | 150 X 220MM | 100 |
| EMD/1 | 175 X 265MM | 100 |
| EME/2 | 220 X 265MM | 100 |
| EMF/3 | 215 X 310MM | 50 |
| EMG/4 | 225 X 310MM | 50 |
| EMH/5 | 265 X 360MM | 50 |
| EMI/6 | 295 X 450MM | 50 |
| EMK/7 | 345 X 450MM | 50 |



Tough, reusable, recyclable. Convenient tear tape for simple, clean opening. Smooth inner lining allows easy product insertion and a pre-scored flap makes closure more efficient. Added padding for protection of heavier items.



GREY MAILING SACKS

| Size | Micron | Case Quantity |
|-------------|--------|---------------|
| 150 X 225MM | 55 | 1000 |
| 225 X 318MM | 55 | 1000 |
| 250 X 350MM | 55 | 1000 |
| 300 X 400MM | 55 | 500 |
| 325 X 475MM | 55 | 500 |
| 400 X 525MM | 55 | 500 |
| 450 X 550MM | 70 | 200 |
| 525 X 600MM | 70 | 200 |
| 575 X 700MM | 70 | 200 |
| 600 X 900MM | 70 | 200 |

Grey and clear mailing bags come with a self seal peel strip closure that forms a tough seal and acts as a security proofing as, when opened it causes distress to the bag

CLEAR MAILING SACKS

| Size | Micron | Case Quantity |
|-------------|--------|---------------|
| 165 X 230MM | 40 | 1000 |
| 229 X 324MM | 40 | 1000 |

DOCUMENTS ENCLOSED ENVELOPES

| Description | Size | Case Quantity |
|-------------|-------------|---------------|
| A5 PRINTED | 225 X 165MM | 1000 |
| A5 CLEAR | 225 X 165MM | 1000 |
| A6 PRINTED | 160 X1 10MM | 1000 |
| A6 CLEAR | 160 X 110MM | 1000 |
| A7 PRINTED | 118 X 94MM | 1000 |
| A7 CLEAR | 118 X 94MM | 1000 |
| DL CLEAR | 112 X 225MM | 1000 |
| DL PRINTED | 112 X 225MM | 1000 |



DOCUMENTS ENCLOSED



PRINTED POUCH TAPE

| Description | Size |
|--------------------------|--------|
| POUCH TAPE ON ROLL X 330 | 8 X 6" |



PRINTED POUCH TAPE

POSTAL TUBES

| Paper Size | Description | External Length | Diameter | Wall Thickness |
|------------|---------------|-----------------|----------|----------------|
| A3 | POSTAL TUBE A | 330MM | 44.5MM | 1.5MM |
| A2 | POSTAL TUBE B | 450MM | 44.5MM | 1.5MM |
| B2 | POSTAL TUBE C | 559MM | 50.8MM | 1.5MM |
| A1 | POSTAL TUBE D | 640MM | 50.8MM | 1.5MM |
| A2 | POSTAL TUBE E | 450MM | 63.5MM | 1.5MM |
| A1 | POSTAL TUBE F | 640MM | 63.5MM | 1.5MM |
| B1 | POSTAL TUBE G | 813MM | 63.5MM | 1.5MM |
| B2 | POSTAL TUBE H | 559MM | 76MM | 1.5MM |
| A1 | POSTAL TUBE I | 640MM | 76MM | 1.5MM |
| B1 | POSTAL TUBE J | 813MM | 76MM | 2MM |
| A0 | POSTAL TUBE K | 940MM | 76MM | 2MM |
| B0 | POSTAL TUBE L | 1046MM | 76MM | 3MM |
| A1 | POSTAL TUBE M | 6401MM | 100MM | 3MM |
| A0 | POSTAL TUBE N | 940MM | 100MM | 3MM |
| B0 | POSTAL TUBE O | 1046MM | 100MM | 3MM |
| A0 | POSTAL TUBE P | 940MM | 127MM | 3MM |
| B0 | POSTAL TUBE R | 1046MM | 152MM | 3MM |



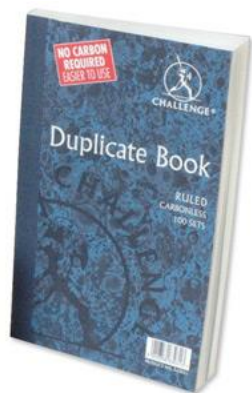
Standard round postal tubes supplied with plastic end plugs. Ideal for plans, posters or valuable documents.
Custom sizes are available subject to minimum order quantities

COPY PAPER

| Size | GSM | Case Quantity |
|------|-----|---------------|
| A4 | 80 | REAM |



Good quality white
printer/copier paper



DUPLICATE & TRIPLICATE BOOKS

| Description | Size | Case Quantity |
|---------------------------|-------------|---------------|
| DUPLICATE BOOK A5 | 216 X 130MM | EACH |
| DUPLICATE INVOICE BOOK A5 | 216 X 130MM | EACH |
| DUPLICATE BOOK A6 | 105 X 130MM | EACH |
| TRIPLICATE BOOK A5 | 216 X 130MM | EACH |

MARKER PENS

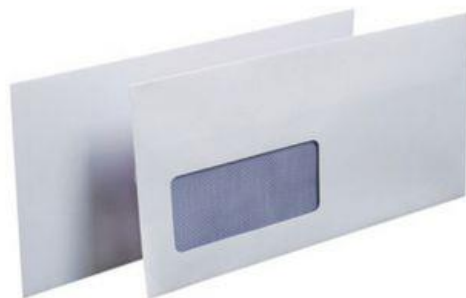
| Description | Colour | Pack Quantity |
|--------------------------|--------|---------------|
| ARTLINE 70 BALL POINT | BLACK | EACH |
| ARTLINE 70 BALL POINT | BLUE | EACH |
| ARTLINE 70 BALL POINT | RED | EACH |
| ARTLINE 70 BALL POINT | GREEN | EACH |
| ARTLINE 90 CHISEL POINT | BLACK | EACH |
| ARTLINE 90 CHISEL POINT | BLUE | EACH |
| ARTLINE 90 CHISEL POINT | RED | EACH |
| ARTLINE 90 CHISEL POINT | GREEN | EACH |
| ARTLINE 100 CHISEL POINT | BLACK | EACH |
| ARTLINE 100 CHISEL POINT | BLUE | EACH |
| ARTLINE 100 CHISEL POINT | RED | EACH |
| ARTLINE 100 CHISEL POINT | GREEN | EACH |



STATIONERY & OFFICE SUPPLIES: pg 48

WHITE ENVELOPES

| Description | Size | GSM | Case Quantity |
|-------------|-------------|-----|---------------|
| C6 PLAIN | 114 X 162MM | 100 | 500 |
| DL PLAIN | 110 X 220MM | 100 | 500 |
| DL WINDOW | 110 X 220MM | 100 | 500 |
| C5 PLAIN | 229 X 162MM | 100 | 500 |
| C5 WINDOW | 229 X 162MM | 100 | 500 |
| C4 PLAIN | 324 X 229MM | 100 | 250 |
| C4 WINDOW | 324 X 229MM | 100 | 250 |



BOARD BACK ENVELOPES

| Description | Size | Case Quantity |
|---------------|-------------|---------------|
| C3 BOARD BACK | 457 X 324MM | 500 |
| C4 BOARD BACK | 324 X 229MM | 500 |
| C5 BOARD BACK | 229 X 162MM | 500 |
| C6 BOARD BACK | 162 X 114MM | 500 |



PENS

| Description | Colour | Pack Quantity |
|---------------|--------|---------------|
| BIC BIRO PENS | BLACK | 20 |
| BIC BIRO PENS | BLUE | 20 |
| PILOT G-2 07 | BLACK | 12 |



BIC PENS



PILOT G-2 07
QUALITY
ROLLERBALL PEN

SHARPIE PENS

| Description | Colour | Pack Quantity |
|-------------|--------|---------------|
| SHARPIE PEN | BLACK | EACH |



SHORTHAND NOTE PAD

HIGHLIGHTER PENS

| Description | Colour | Pack Quantity |
|-----------------|--------|---------------|
| HIGHLIGHTER PEN | GREEN | EACH |
| HIGHLIGHTER PEN | YELLOW | EACH |
| HIGHLIGHTER PEN | PINK | EACH |
| HIGHLIGHTER PEN | ORANGE | EACH |



HIGHLIGHTER PENS

STICKY NOTES

| Description | Size | Case Quantity |
|--------------------------|------------|---------------|
| YELLOW STICKY NOTES X100 | 38 X 51MM | 12 PADS |
| YELLOW STICKY NOTES X100 | 76 X 76MM | 12 PADS |
| YELLOW STICKY NOTES X100 | 76 X 127MM | 12 PADS |
| YELLOW STICKY NOTES X100 | 76 X 51MM | 12 PADS |
| YELLOW STICKY NOTES X100 | 76 X 102MM | 12 PADS |



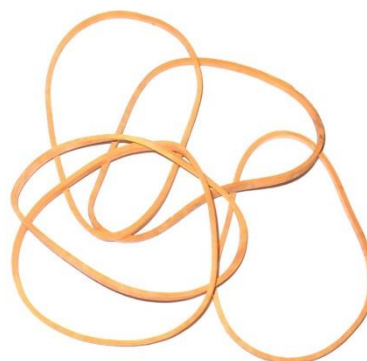
STICKY NOTE



We stock branded sellotape

OFFICE EQUIPMENT

| Description | Pack Quantity |
|--------------------------|---------------|
| HOLE PUNCH | EACH |
| DESK STAPLER | EACH |
| 3/4" SELLOTAPE ROLL | EACH |
| BLU TACK | PACK |
| DESK SELLOTAPE DISPENSER | EACH |
| 12" SHATERPROOF RULER | EACH |
| TIPEX BOTTLE 20ML | EACH |
| OFFICE SCISSORS | EACH |
| PAPER CLIPS | 500 |
| DRAWING PINS | 5000 |
| 26/6 STAPLES | 500 |



RUBBER BANDS

| Length | Width | Pack Weight |
|--------|-------|-------------|
| 60MM | 1.5MM | 500G |
| 80MM | 3MM | 500G |
| 110MM | 6MM | 500G |
| 160MM | 3MM | 500G |



BESPOKE RUBBER STAMPS



Ever considered custom branding with a rubber stamp? We are able to supply a variety of stamps in a wide range of sizes to suit your needs.

Whether it's a wooden handled rubber stamp custom printed with your company logo, or a self inking stamp to print product dates/codes, we can produce them all

Many of our customers use their stamps to custom brand the paper bags they buy from us. This is a cost effective and easy way to get your company logo onto your paper bags

Stamp Pads and Inks also available

Customise

- Receipts
 - Paper Bags
 - Carrier Bags
 - Tissue
 - Wrapping Paper
- And almost anything else that you wish to brand!





We are stockists of Sealed Air products, the brand leader in barrier bubble protective packaging

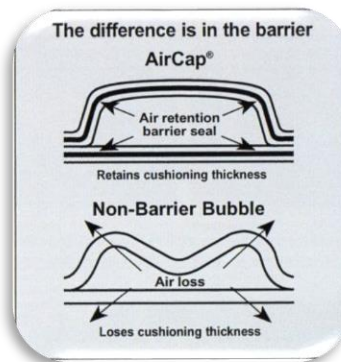
EL Light – With the same warehouse space you can store 46% more AirCap E Bubble in comparison to the standard brands. Besides the reduction of CO2 emission, AirCap E is reusable and recyclable. The use of the barrier allows for use of a thinner film that also contributes to source reduction.



Buy 1 roll of
300mm x 100m
bubble wrap for
just £10.00!

SMALL BUBBLE WRAP (EL)

| Roll Width | Roll Length | Split To |
|------------|-------------|------------|
| 1200MM | 100M | 1 x 1200MM |
| 1200MM | 100M | 2 x 600MM |
| 1500MM | 100M | 1 x 1500MM |
| 1500MM | 100M | 2 x 750MM |
| 1500MM | 100M | 3 x 500MM |
| 1500MM | 100M | 5 x 300MM |



LARGE BUBBLE WRAP (HL)

| Roll Width | Roll Length | Split To |
|------------|-------------|------------|
| 1200MM | 50M | 1 x 1200MM |
| 1200MM | 50M | 2 x 600MM |
| 1500MM | 50M | 1 x 1500MM |
| 1500MM | 50M | 2 x 750MM |
| 1500MM | 50M | 3 x 500MM |
| 1500MM | 50M | 5 x 300MM |



SMALL BUBBLE



LARGE BUBBLE

OTHER SIZES AND GRADES OF BUBBLE WRAP ARE AVAILABLE, PLEASE ENQUIRE.

SELF SEAL BUBBLE BAGS WITH LIP

| Metric Size | Imperial Size | Product Ref | Box Qty |
|------------------|---------------|-------------|---------|
| 100 x 135 + 30mm | 4 x 5.25" | BP1 | 750 |
| 130 x 185 + 30mm | 5.12 x 7.25" | BP2 | 500 |
| 180 x 235 + 30mm | 7 x 9.25" | BP3 | 300 |
| 230 x 285 + 30mm | 9 x 11.25" | BP4 | 300 |
| 280 x 360 + 30mm | 11 x 14" | BP5 | 150 |
| 305 x 435 + 30mm | 12 x 17" | BP6 | 150 |
| 380 x 435 + 30mm | 15 x 17" | BP7 | 100 |
| 250 x 305 + 30mm | 10 x 12" | BP8 | 200 |



FLO-PAK LOOSEFILL

| Pack Size | Pack Quantity |
|---------------|---------------|
| 15 CUBIC FEET | BAG |

Made from 100% recycled EPS material and with the classic figure eight design, 'Flo Pak' is perfect for filling the void spaces within a box and creates superb protection for even the most unusually shaped item.

'Flo Pak' chips are green in colour



NET SACKS

| Description | Size | Quantity |
|-------------|---------|----------|
| NET SACKS | 32X48CM | 1000 |
| NET SACKS | 46X59CM | 1000 |

A strong and effective solution for packaging various types of fresh produce. Net bags are also widely used for the packing of logs and kindling wood.



NET SACKS

CORRUGATED CARDBOARD ROLLS

| Roll Width | Roll Length |
|------------|-------------|
| 150MM | 75M |
| 300MM | 75M |
| 600MM | 75M |
| 750MM | 75M |
| 900MM | 75M |
| 1200MM | 75M |
| 1500MM | 75M |
| 1800MM | 75M |

Ideal for interleaving and separating products, corrugate cardboard rolls are flexible, lightweight and offer great protection for delicate surfaces and lightweight items. Manufactured from recycled paper and recyclable.



CORRUGATED ROLLS

QUALITY DECORATIVE TISSUE

| Size | Colour | Pack Quantity |
|----------|------------|---------------|
| 18 X 28" | CERISE | 480 SHEETS |
| 18 X 28" | PALE PINK | 480 SHEETS |
| 18 X 28" | LIME | 480 SHEETS |
| 18 X 28" | LAVENDER | 480 SHEETS |
| 18 X 28" | ORANGE | 480 SHEETS |
| 18 X 28" | WHITE | 480 SHEETS |
| 18 X 28" | BLACK | 480 SHEETS |
| 18 X 28" | DARK GREEN | 480 SHEETS |
| 18 X 28" | VIOLET | 480 SHEETS |
| 18 X 28" | DARK BLUE | 480 SHEETS |
| 18 X 28" | YELLOW | 480 SHEETS |
| 18 X 28" | BURGUNDY | 480 SHEETS |
| 18 X 28" | VANILLA | 480 SHEETS |
| 18 X 28" | RED | 480 SHEETS |



NEWS PAPER OFFCUTS

| Sheet Size | Colour | Weight Per Pack |
|------------|--------|-----------------|
| 17 X 20" | WHITE | 10KG |
| 20 X 30" | WHITE | 10KG |

News offcuts can be used for general wrapping applications as well as for 'scrunch' filling of voids when packing cases. Manufactured from unprinted white newsprint paper



KRAFT PAPER ROLLS

| Roll Width | Roll Length | Gsm |
|------------|-------------|-----|
| 500MM | 200M | 88 |
| 600MM | 200M | 88 |
| 900MM | 200M | 88 |
| 1200MM | 200M | 88 |

Ideal for wrapping parcels and packages and providing additional protection and a smart finish, our Kraft rolls are of superb quality and are perfect for medium to heavy duty use



KRAFT ROLL

WHITE CAP TISSUE PAPER

| Size | Pack Quantity |
|--------------------|---------------|
| 16 X 24" | 480 SHEETS |
| 18 X 28" | 480 SHEETS |
| 18 X 28" ACID FREE | 480 SHEETS |



Commercially acid free white cap tissue is ideal for wrapping most products especially fragile items such as glass

PURE KRAFT SHEETS

| Size | Pack Quantity |
|-------------|---------------|
| 500 x 750MM | 480 SHEETS |



Pure Kraft sheets cut to size and ready to use

QUALITY VINYL SEALING TAPE

| Roll Width | Roll Length | Case Quantity | Roll Type/Colour |
|------------|-------------|---------------|------------------|
| 25MM | 66M | 72 | CLEAR |
| 50MM | 66M | 36 | CLEAR |
| 25MM | 66M | 72 | BUFF |
| 50MM | 66M | 36 | BUFF |
| 75MM | 66M | 24 | CLEAR |
| 75MM | 66M | 24 | BUFF |



Cellofix Vinyl premium tape is of a high quality and is our best selling case sealing tape

LOW NOISE POLYPROP TAPE

| Roll Width | Roll Length | Case Quantity | Roll Type |
|------------|-------------|---------------|-----------|
| 50MM | 66M | 36 | BUFF |
| 50MM | 66M | 36 | CLEAR |

ECONOMY POLYPROPYLENE TAPE

| Roll Width | Roll Length | Case Quantity | Roll Type/Colour |
|------------|-------------|---------------|------------------|
| 25MM | 66M | 72 | CLEAR |
| 50MM | 66M | 36 | CLEAR |
| 25MM | 66M | 72 | BUFF |
| 50MM | 66M | 36 | BUFF |



GLASS TAPE

PRINTED POLYPROPYLENE TAPES

| Roll Width | Roll Length | Case Quantity | Print |
|------------|-------------|---------------|------------------|
| 50MM | 66M | 36 | HWC GLASS |
| 50MM | 66M | 36 | FRAGILE |
| 50MM | 66M | 36 | QUARANTINE |
| 50MM | 66M | 36 | HANDLE WITH CARE |
| 50MM | 66M | 36 | CAUTION |



FRAGILE TAPE

COLOURED TAPE

| Roll Width | Roll Length | Case Quantity | Colour | Tape Type |
|------------|-------------|---------------|--------|----------------|
| 50MM | 66M | 36 | BLUE | POLYPROP/VINYL |
| 50MM | 66M | 36 | WHITE | POLYPROP/VINYL |
| 50MM | 66M | 36 | RED | POLYPROP/VINYL |
| 50MM | 66M | 36 | YELLOW | POLYPROP/VINYL |
| 50MM | 66M | 36 | ORANGE | POLYPROP/VINYL |
| 50MM | 66M | 36 | GREEN | POLYPROP/VINYL |
| 50MM | 66M | 36 | BLACK | POLYPROP/VINYL |



COLOURED TAPE



Easy tear and removes cleanly after use

MASKING TAPE

| Roll Width | Roll Length | Case Quantity |
|------------|-------------|---------------|
| 25MM | 50M | 72 |
| 38MM | 50M | 48 |
| 50MM | 50M | 36 |



We stock branded sellotape

CROSS WEAVE TAPE

| Roll Width | Roll Length | Case Quantity |
|------------|-------------|---------------|
| 12MM | 50M | 72 |
| 25MM | 50M | 36 |
| 38MM | 50M | 24 |
| 50MM | 50M | 18 |
| 75MM | 50M | 12 |
| 100MM | 50M | 12 |

An extremely high quality high strength cross woven filament tape, for use in general bundling and for wrapping around palletised goods



CROSS WEAVE TAPE



SELF ADHESIVE KRAFT PAPER TAPE

| Roll Width | Roll Length | Case Quantity |
|------------|-------------|---------------|
| 25MM | 50M | 18 |
| 50MM | 50M | 72 |
| 75MM | 50M | 36 |
| 100MM | 50M | 24 |

Kraft paper tape widely used within the framing industry.



Gummed Paper Tape Dispenser

GUMMED PAPER TAPE

| Roll Width | Roll Length | Case Quantity |
|------------|-------------|---------------|
| 36MM | 200M | 18 |
| 50MM | 200M | 72 |
| 75MM | 200M | 36 |
| 100MM | 200M | 24 |

A paper based water activated adhesive tape. Gummed paper tape penetrates into the fibres of the carton creating a total tamper evident bond. This tape is best used with a gummed tape dispenser, please enquire for details



BESPOKE PRINTED TAPES

We specialise in tapes printed with your logo. All varieties and size of tape available starting from just 36 rolls. please enquire for details.

TAPE DISPENSERS

| Description | Roll Size |
|---------------------------------------|------------------|
| PISTOL GRIP TAPE DISPENSER WITH BRAKE | 50MM |
| PISTOL GRIP TAPE DISPENSER WITH BRAKE | 75MM |
| BONUS TAPE DISPENSER | 50MM (38MM CORE) |



50MM GUN



BAG NECK SEALER & LASSO TAPE



BAG NECK SEALER & TAPES

| Description/ Size | Case Quantity |
|--------------------------|---------------|
| BAG NECK SEALING MACHINE | 1 |
| LASSO TAPE RED | 16 ROLLS |
| LASSO TAPE YELLOW | 16 ROLLS |
| LASSO TAPE BLUE | 16 ROLLS |

BONUS TAPE

| Description | Metric Size | Case Quantity |
|--------------------------|-------------------------|---------------|
| BONUS CLEAR SOLVENT TAPE | 50MM X 150M (38MM CORE) | 36 |
| BONUS CLEAR HOTMELT TAPE | 50MM X 66M (75MM CORE) | 36 |
| BONUS BROWN HOTMELT TAPE | 50MM X 66M (75MM CORE) | 36 |
| BONUS BROWN HOTMELT TAPE | 50MM X 150M (38MM CORE) | 36 |
| BONUS CLEAR HOTMELT TAPE | 50MM X 150M (38MM CORE) | 36 |



Bonus tape is available in 150m rolls which means fewer roll changes are required. Bonus tape also provides good adhesion to both warm and cold surfaces. Requires use of the silent or bonus dispenser.

DOUBLE SIDED TAPE

| Metric Size | Case Quantity |
|--------------|---------------|
| 12MM X 50MTR | 144 |
| 19MM X 50MTR | 96 |
| 25MM X 50MTR | 72 |
| 50MM X 50MTR | 36 |

A general purpose double sided polyprop film, hotmelt adhesive



DOUBLE SIDED TAPE

CLOTH TAPE (DUCT)

| Colour | Metric Size | Case Quantity |
|--------|--------------|---------------|
| BLACK | 50MM X 50MTR | 24 |
| WHITE | 50MM X 50MTR | 24 |
| SILVER | 50MM X 50MTR | 24 |
| RED | 50MM X 50MTR | 24 |
| BLACK | 75MM X 50MTR | 16 |
| WHITE | 75MM X 50MTR | 16 |
| SILVER | 75MM X 50MTR | 16 |
| RED | 75MM X 50MTR | 16 |
| BLACK | 90MM X 50MTR | 12 |
| WHITE | 90MM X 50MTR | 12 |
| SILVER | 90MM X 50MTR | 12 |

Vinyl cloth reinforced tape in various colours with aggressive adhesive backing. The ultimate maintenance aid. A must for temporary repair work, studio and artwork. Waterproof, suitable for use on pipes, ducts and insulation



CLOTH TAPE

PALLET WRAP CLEAR (CAST FILM)

| Roll Width | Roll Length | Micron | Core | Case Quantity |
|------------|-------------|--------|----------|---------------|
| 400MM | 250M | 17 | STANDARD | 6 |
| 400MM | 250M | 17 | EXTENDED | 6 |
| 400MM | 250M | 20 | STANDARD | 6 |
| 400MM | 250M | 20 | EXTENDED | 6 |
| 400MM | 200M | 34 | STANDARD | 6 |
| 400MM | 200M | 34 | EXTENDED | 6 |



Pallet wrap is an effective way to stabilise goods on a pallet keeping away dirt and moisture.



PALLET WRAP DISPENSER



PALLET WRAP BLACK (CAST FILM)

| Roll Width | Roll Length | Micron | Core | Case Quantity |
|------------|-------------|--------|----------|---------------|
| 500MM | 200M | 25 | STANDARD | 6 |
| 500MM | 200M | 25 | EXTENDED | 6 |

Sometimes referred to as 'security film', black wrap is super strong and is opaque to hide the goods that are wrapped.

HANDY WRAP

| Roll Width | Roll Length | Micron |
|------------|-------------|--------|
| 100MM | 150M | 15 |



Other sizes and thicknesses of wrap are available, please enquire

Small and lightweight, Handy wrap rolls are ideal for bundling up lighter items or for those who are wrapping infrequently. These are best used with our handy wrap dispenser



HANDY WRAP DISPENSER



WEDOPACKAGING

www.wedopackaging.co.uk

**ORDER ANY OF OUR INDUSTRIAL
PACKAGING MATERIALS ONLINE THROUGH
OUR NEW WEBSITE
WWW.WEDOPACKAGING.CO.UK**



**ON YOUR FIRST CARRIAGE
PAID ORDER***



SAVE

**LIMITED
OFFER**

ENTER CODE: **WDP5**

**AT THE CHECKOUT TO CLAIM YOUR
DISCOUNT**

5% DISCOUNT APPLIED WHEN ORDERING OVER £100 EXCLUDING VAT*

***BROCHURE DISCOUNT – ENTER THE CODE
WDP5 AT THE CHECKOUT TO RECEIVE A 5%
DISCOUNT ON YOUR FIRST CARRIAGE PAID
ORDER**



We've Slashed our delivery costs!

**Spend just £25 and receive
free delivery!**



Offer available for a limited time only



Can be used in conjunction with other offers

*£25.00 FREE DELIVERY OFFER AVAILABLE ONLINE ONLY



TIDMAS TOWNSEND

An eco-friendly customer focused business

Industrial & Retail Packaging Materials

tidmastownsend.co.uk ☎ 01323 734240

NOTES

| |
|--|
| |
| |
| |
| |
| |
| |
| |
| |
| |
| |
| |
| |
| |
| |
| |
| |
| |
| |
| |
| |



TIDMAS TOWNSEND

An eco-friendly customer focused business

Industrial & Retail Packaging Materials

tidmastownsend.co.uk ☎ 01323 734240



208 – 210 SEASIDE, EASTBOURNE, EAST SUSSEX, BN22 7QS

